

# Magic Cube User Manual

## What is a Magic Cube?

Magic Cube is a device that can function as the remote of air con, so that user can easily gain control from smartphone.

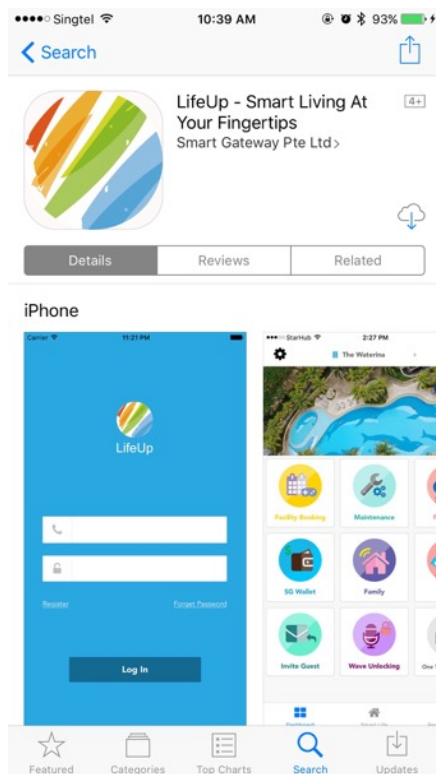
## What's in the Magic Cube package?

The Magic Cube Package contains a magic cube box and a micro USB power cable.

## How to use the Magic Cube?

Step 1. Make sure the home WiFi has internet access.

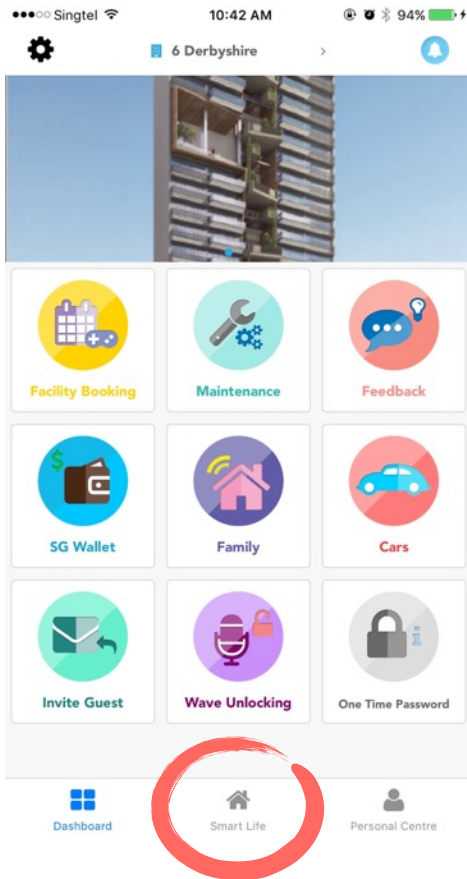
Step 2. Install Lifeup App on the smartphone.



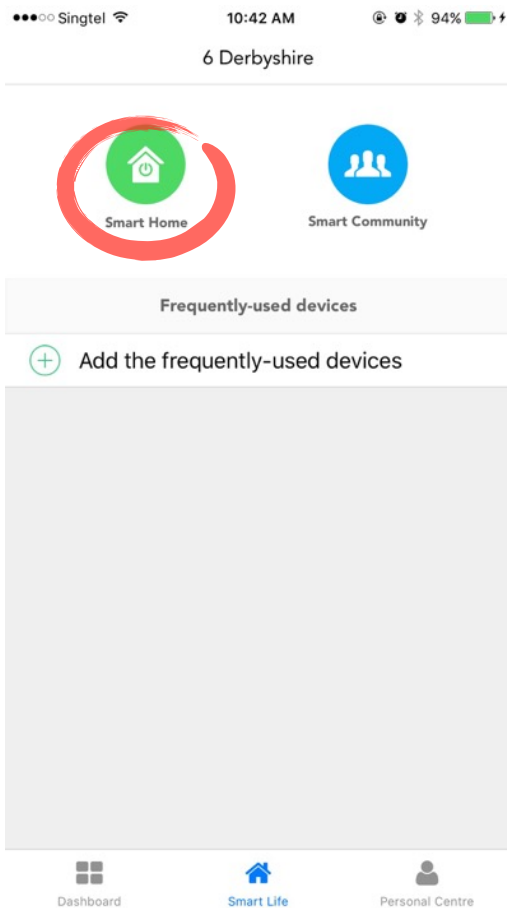
<https://appsto.re/sg/aaCtdb.i>

Step 3. Power on the Magic Cube with the micro USB cable.

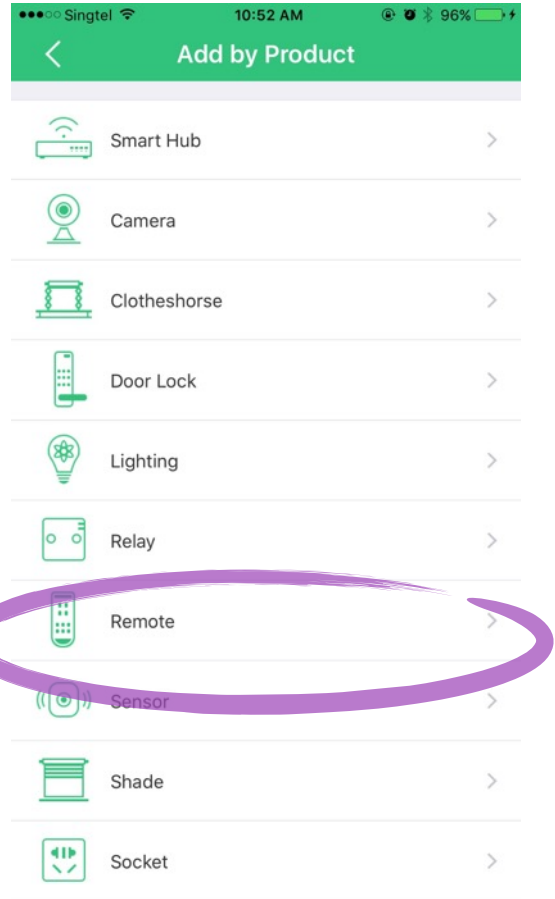
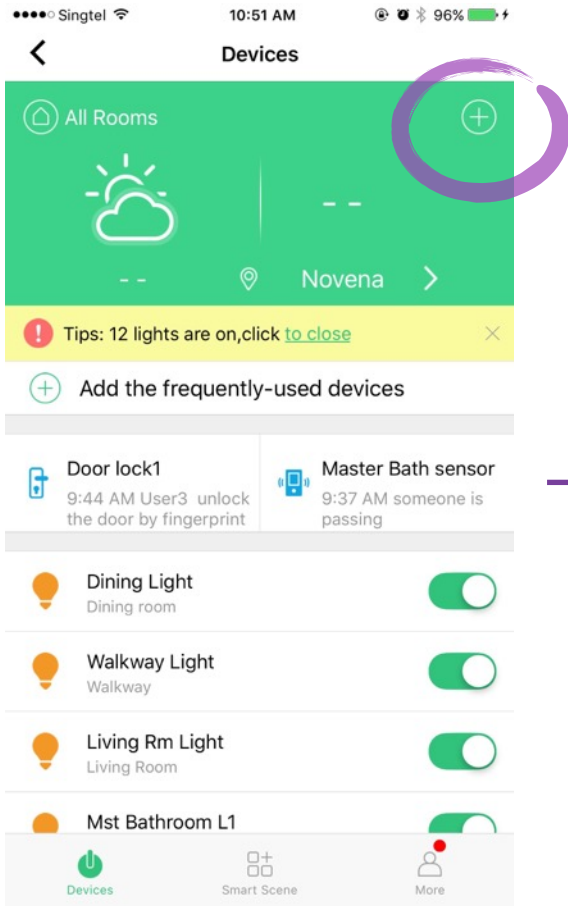
Step 4. Open Lifeup App, log in and locate “Smart Life” at the bottom bar.



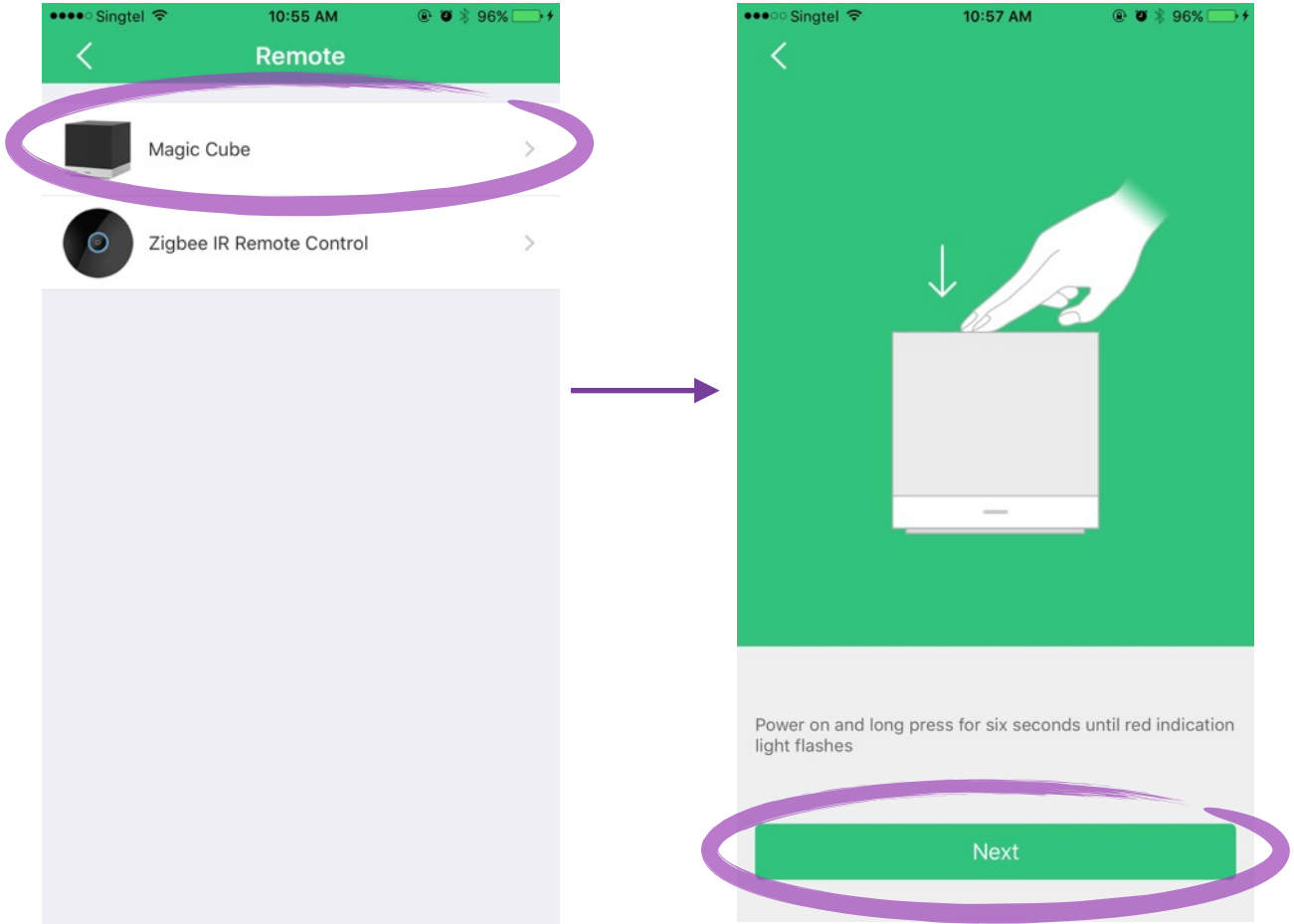
Then select “Smart Home” at the top left corner.



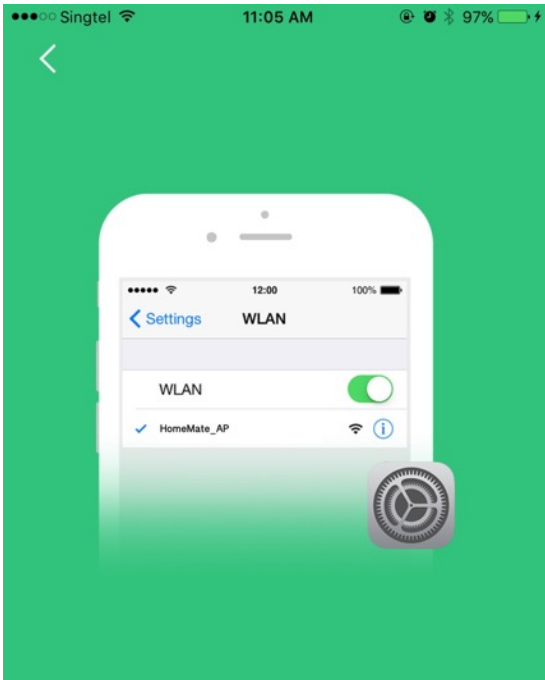
Step 5. Now you should see the device control panel. Press the “+” at the top right corner and select “Remote” from the pop up list.



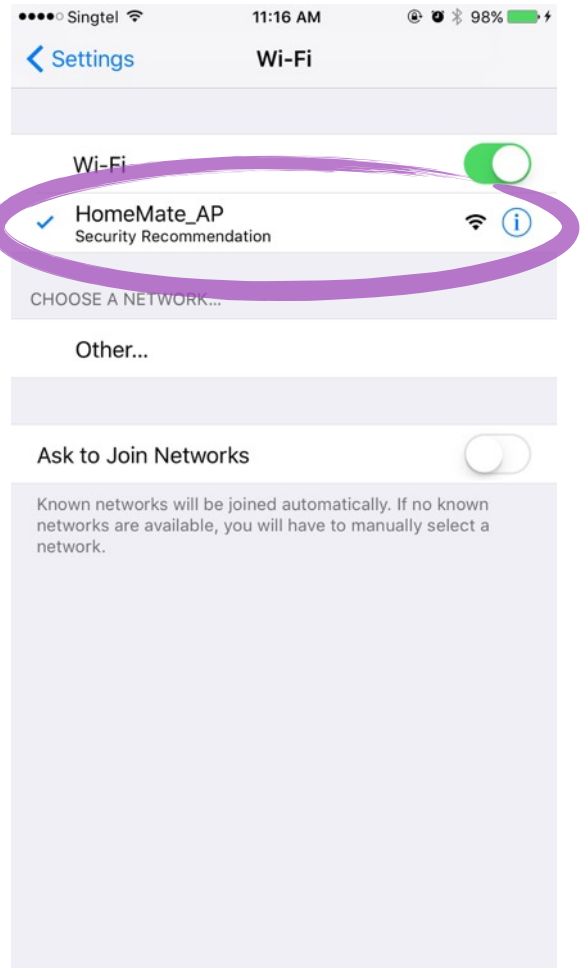
Step 6. Select “Magic Cube”. Follow the instructions on the app. When the red indicating light flashes in a short interval, press “Next”.



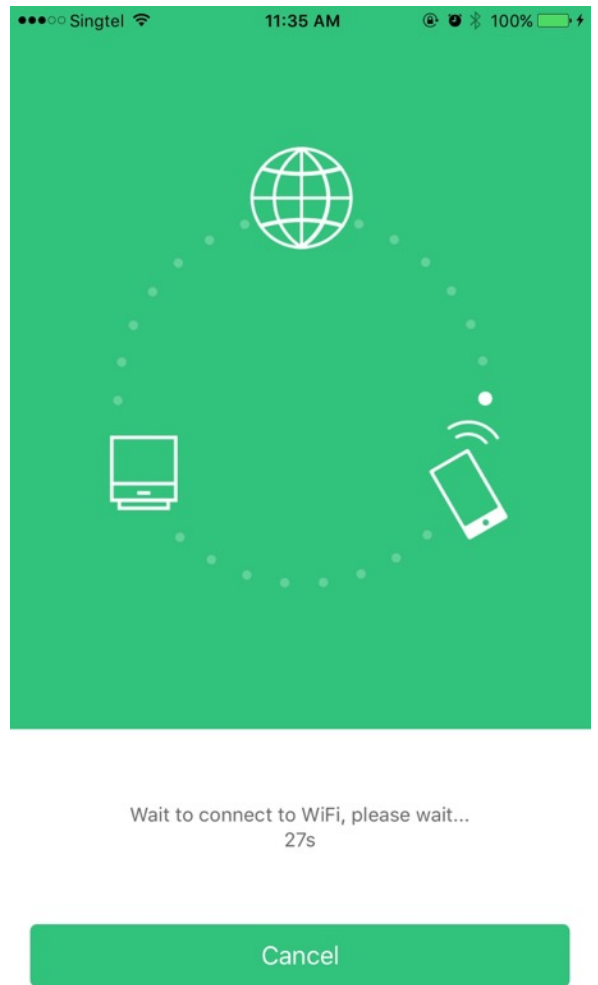
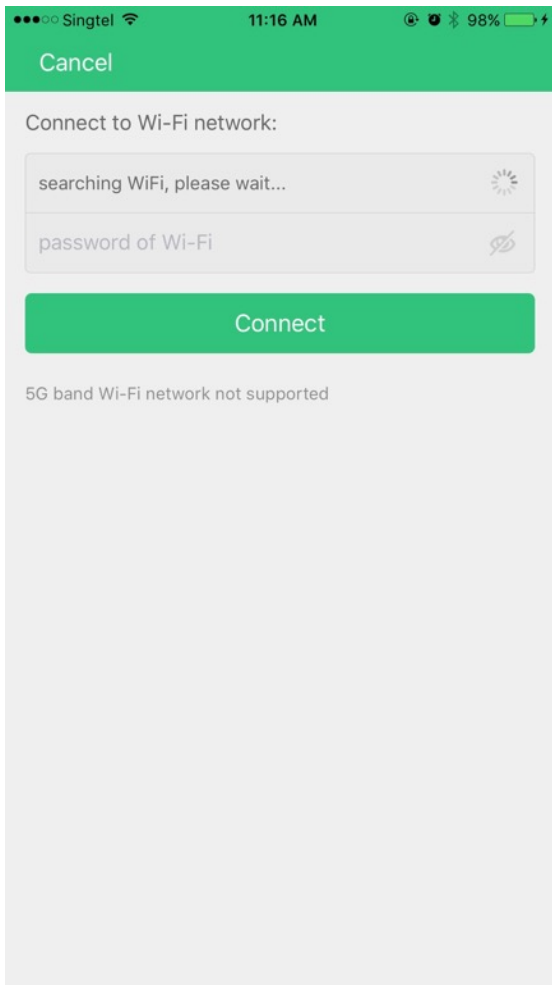
Step 7. Connect to "HomeMate\_AP" in network settings.



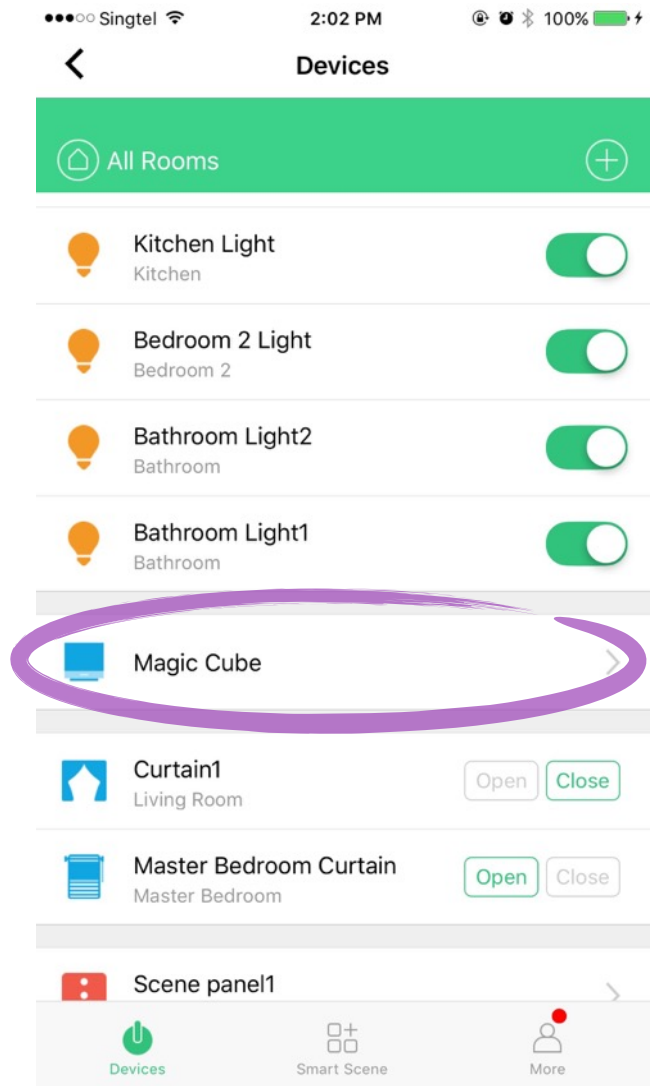
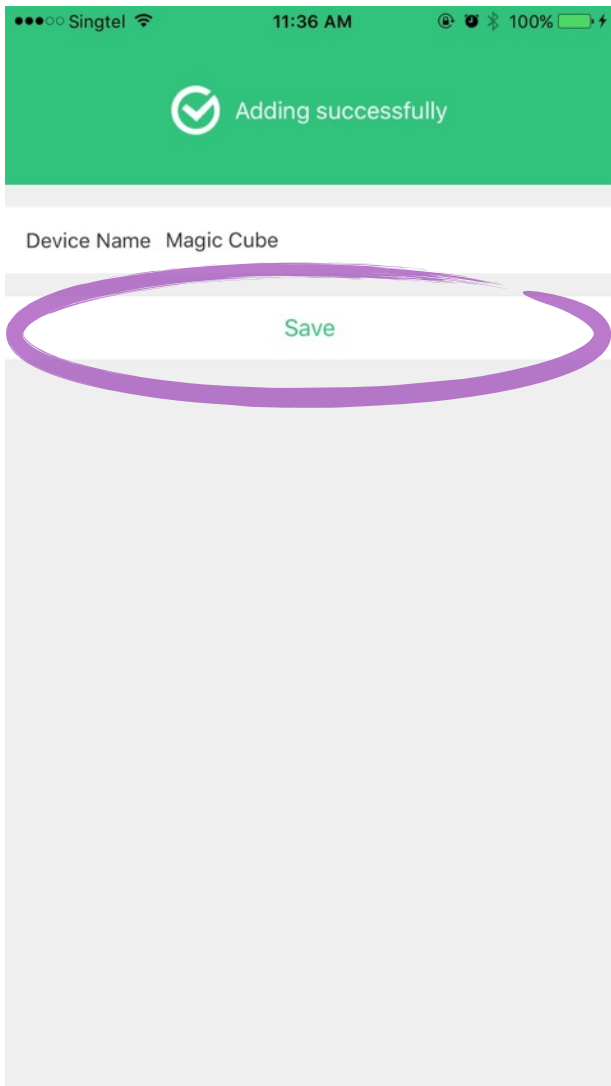
In next page, select 'HomeMate\_AP' from network list. Then go back to LifeUp App.



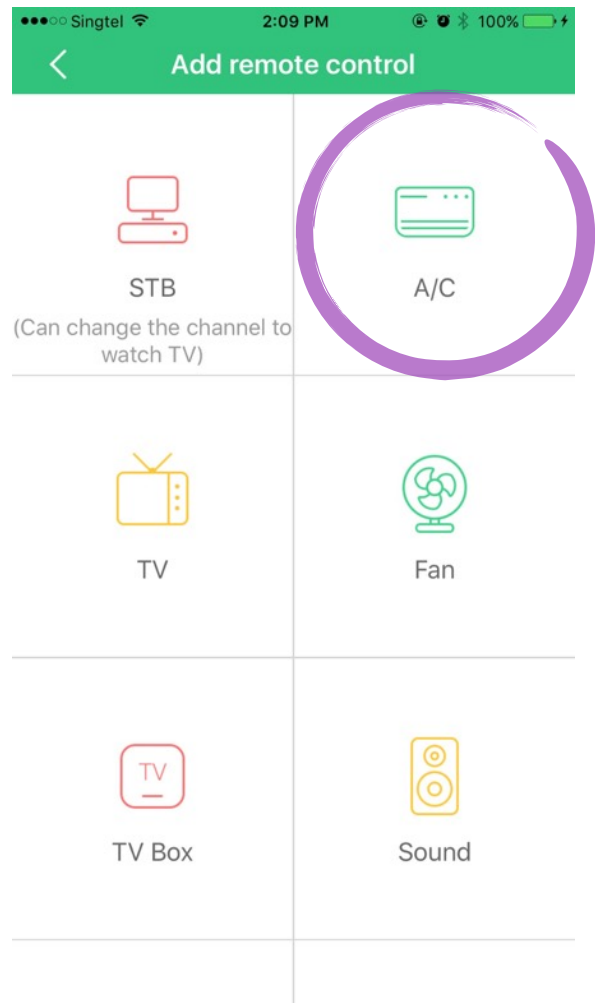
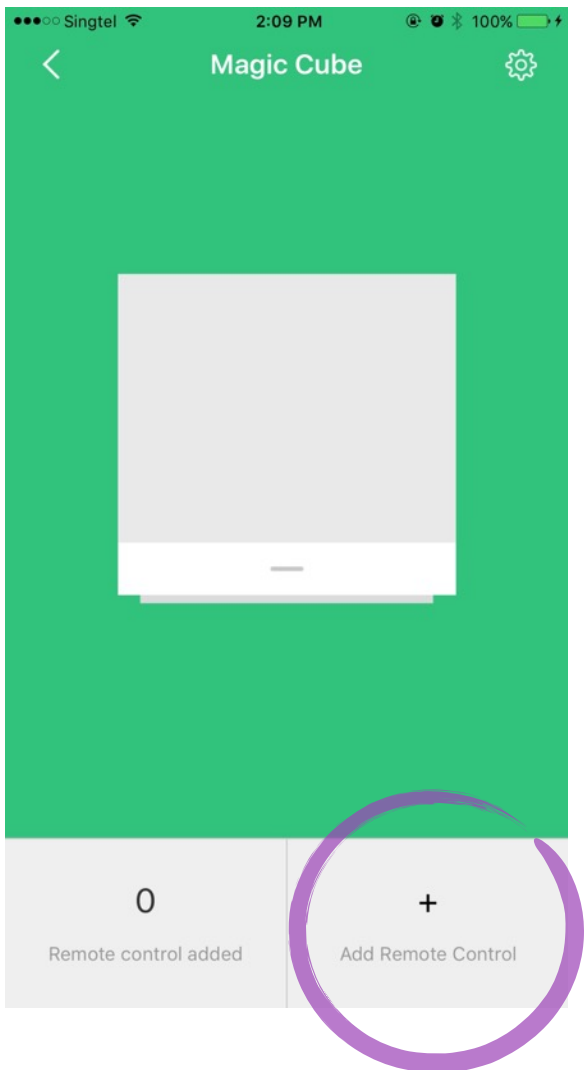
Step 8. Return to Lifeup APP, wait for the WiFi and device connection. (You may need to enter the WiFi password for the first time.)



Step 9. If the connection is successful, the following screen will pop up. Save this device and you shall see Magic Cube in the control panel. If it is not successful, please return to step 5.

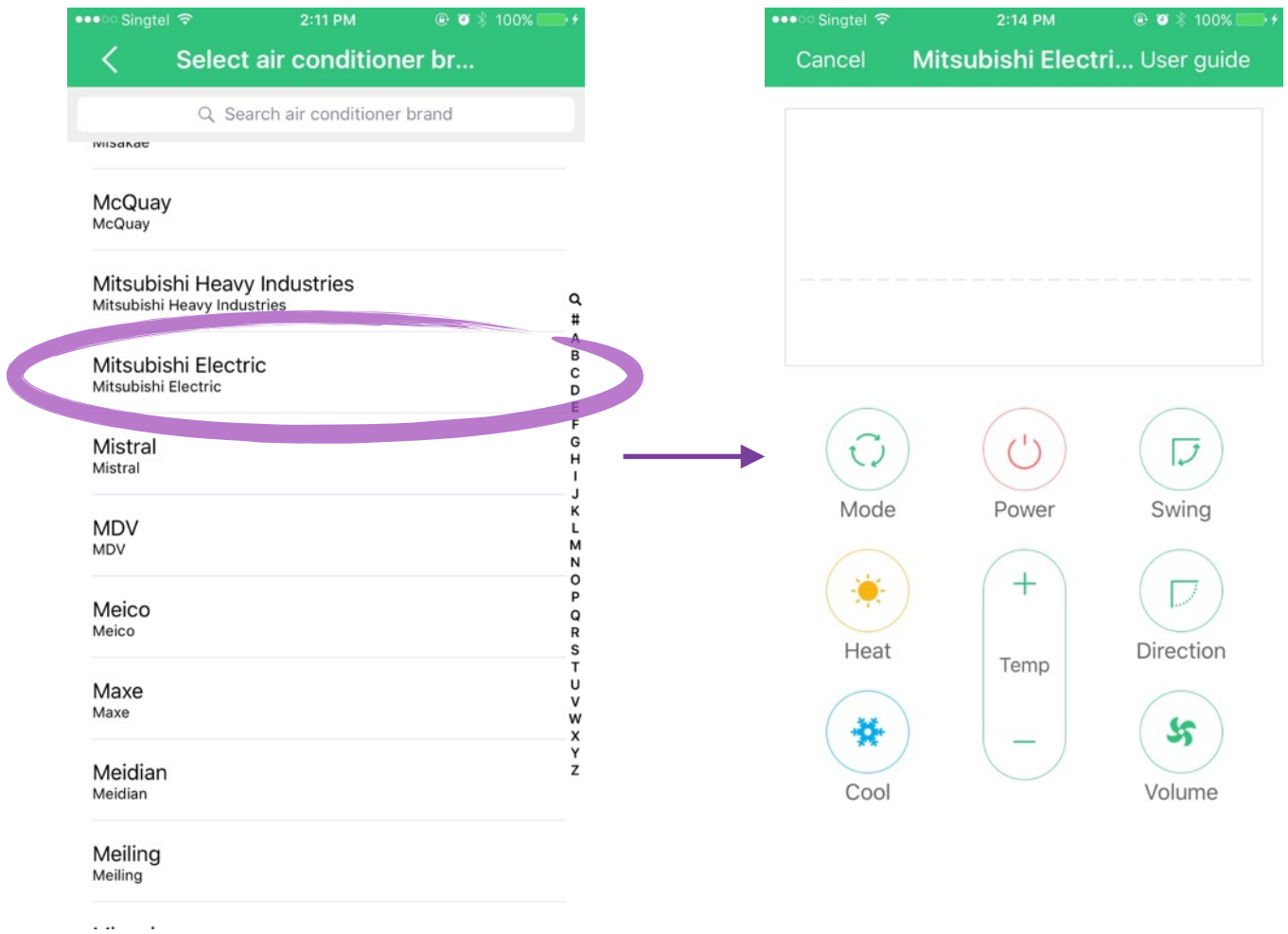


Step 10. Select "Magic Cube" from the menu and then select "Add Remote Control". Choose "A/C".

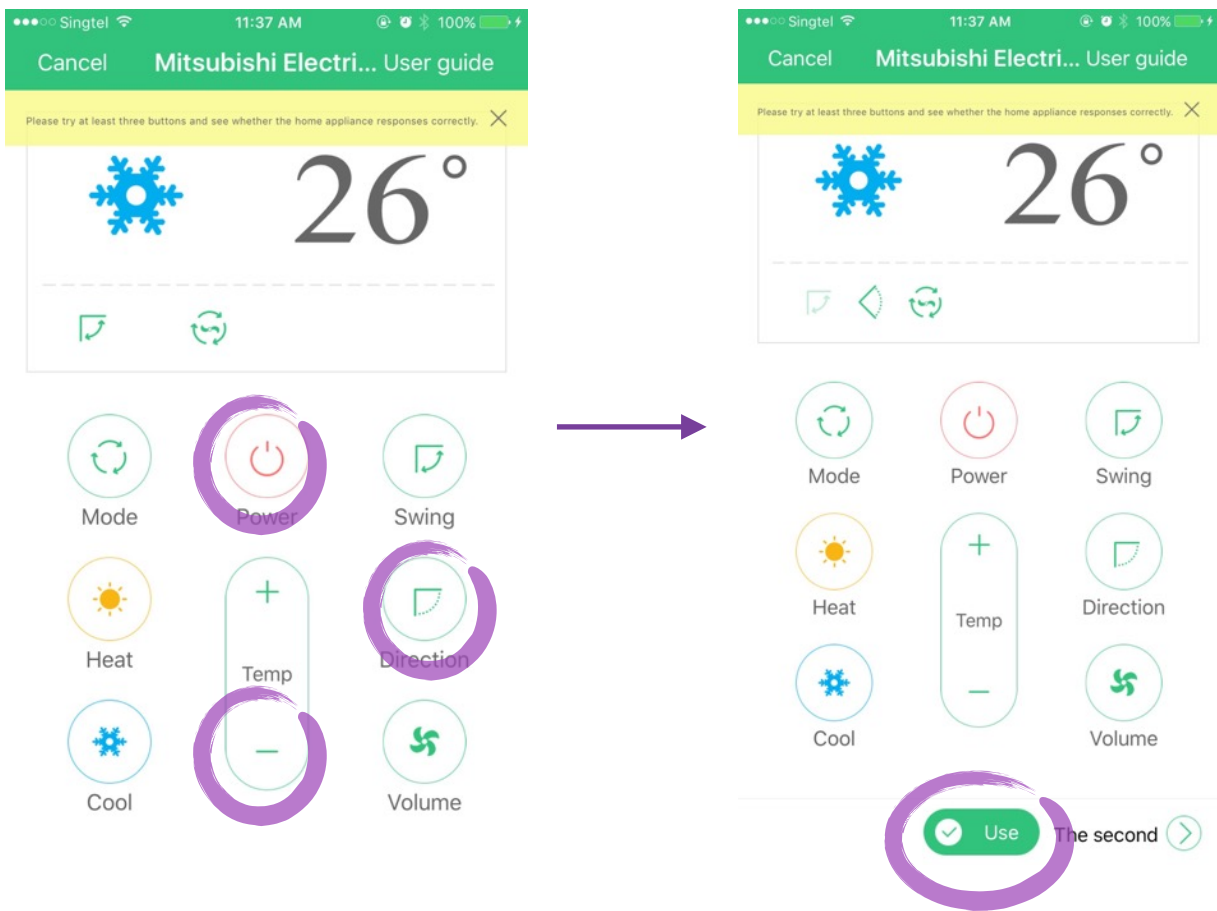




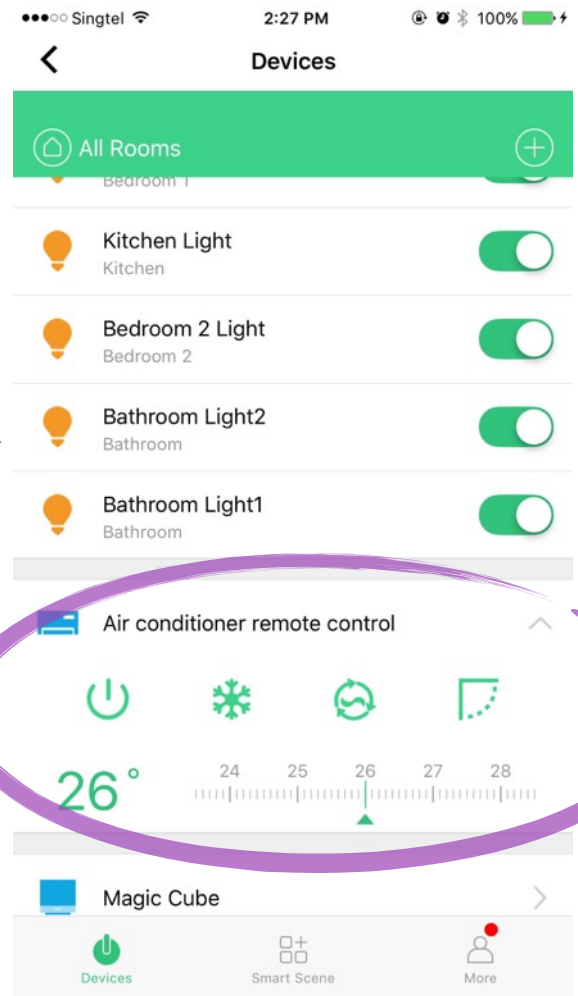
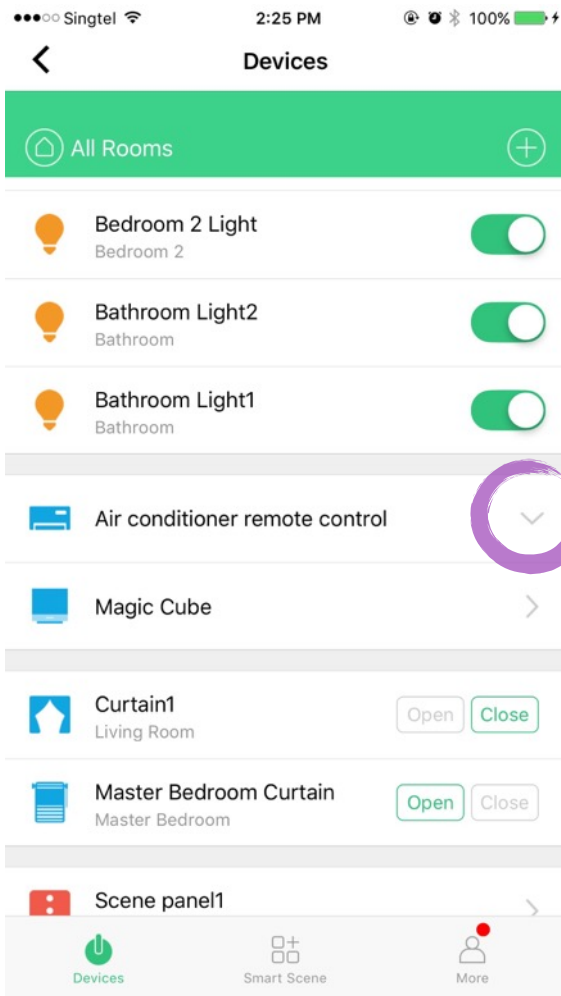
Step 11. From the list, find and select “Mitsubishi Electric”.



Step 12. Try to control the air con from the app. Try at least three different buttons, if fit, then select "Use" to confirm this combination. If not fit, then switch to another key set.



Step 13. Now you are all set. You may quickly access air con control by pressing the arrow shown below:



Suggestions during daily use:

There is an adapter carefully chosen for each magic cube coming along with the welcome package. Please note that the rated voltage and current of the Magic Cube is “5V, ≥1A”. DO NOT mix this adapter with other brands/specifications. However, it is fine to connect the cube to PC or laptop USB port.

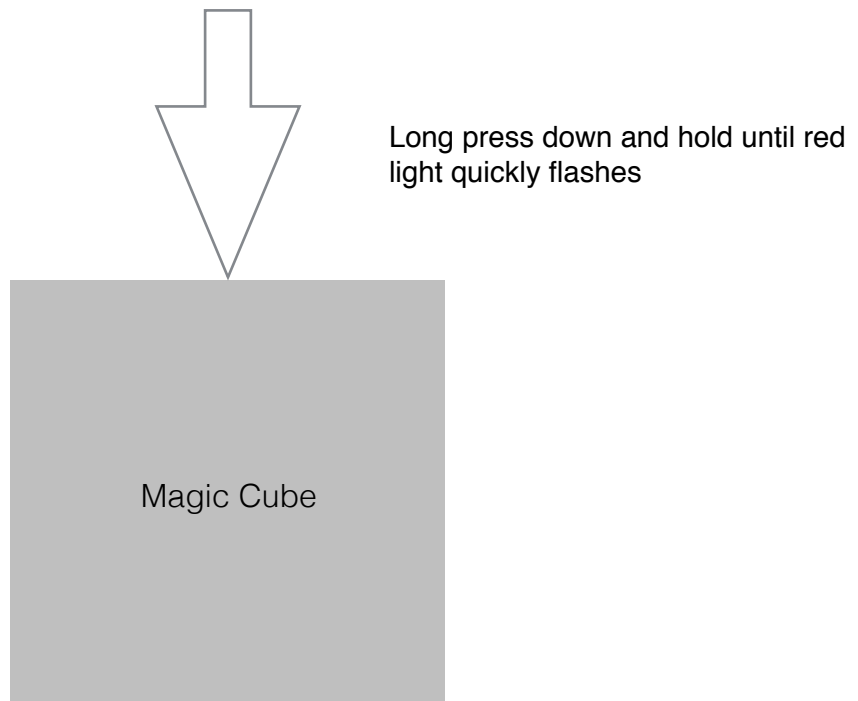
Try to place the cube at an open area like a table or counter. Close to the air con.

Indicating light colour table:

Light Status	Remark
Red constant light	Cannot connect to router, factory defaults status
Red quick flash	Pairing mode
Red slow flash	Connecting to server
Blue constant light	Normal working status
Blue flash once	Transmitting IR code once
Purple constant light	IR code learning mode

How to reset to factory default:

When connected to power, long press down and hold the cube until red light quickly flashes.



### Product Specifications

Product Model	CT10W-B1GN
Product Size	53*53*54 mm
Product Material	PC/ABS/TPU
Product Weight	102±3g
Wireless type	WiFi 802.11 b/g/n 2.4 GHz
IR frequency	20~60kHz
Working temperature	-20~55 °C
Power input	5 ± 0.1V, ≥1A, micro USB
Standby Power consumption	< 0.5 W