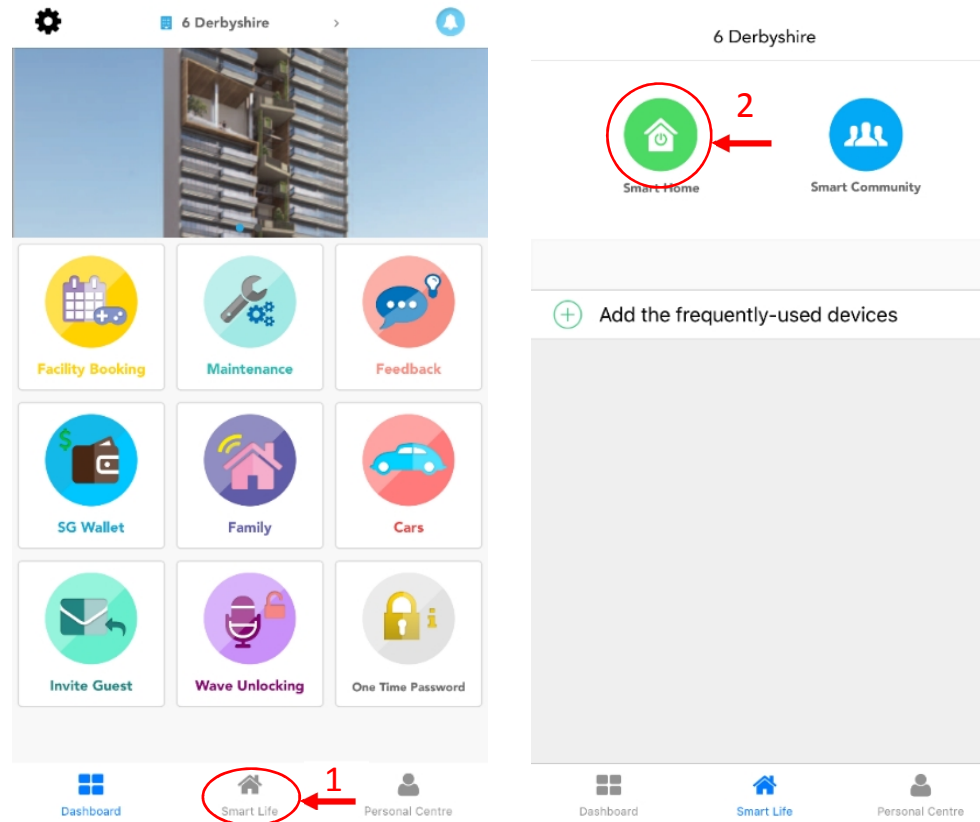


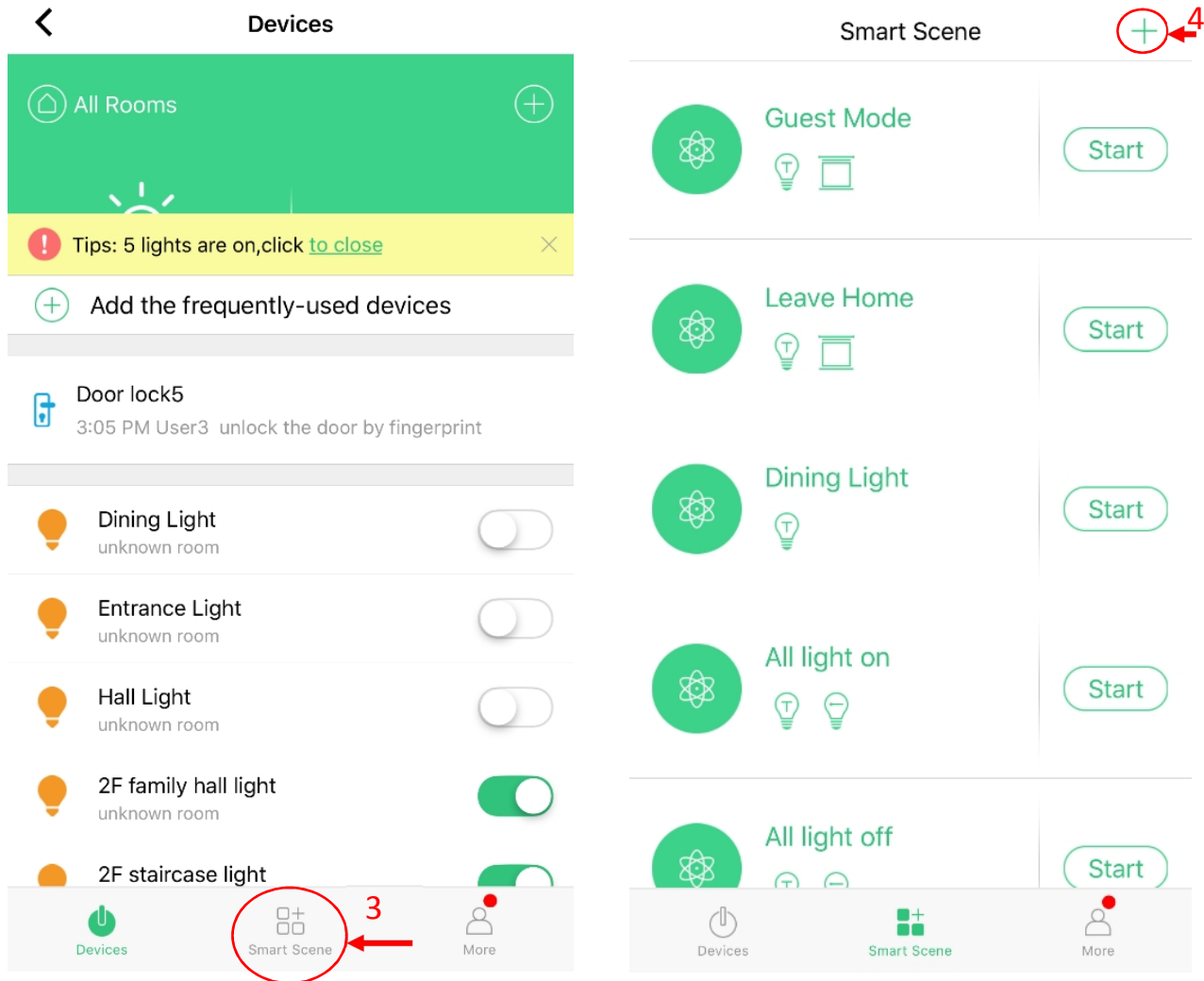
Create {Scene Mode} and attach to the [Scene Switch]

Create new {Scene Mode}

1. Open the Smart Home Main Menu: Step 1-2

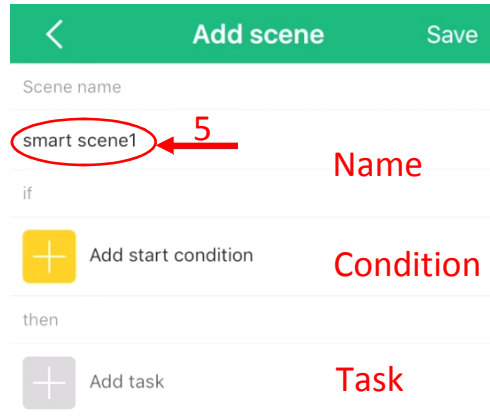


2. Starting to Create New Scene: Step 3-4

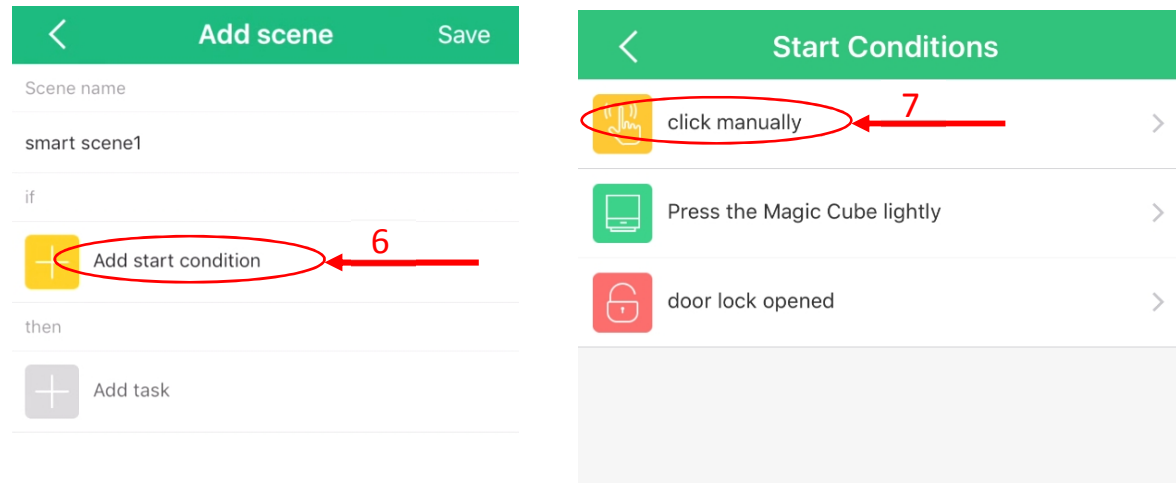


3. Set Name, Condition and Task

A. Set Name: Step 5, Key In the new name.



B. Set Condition: Step 6-7







C. Set Task: Step 8

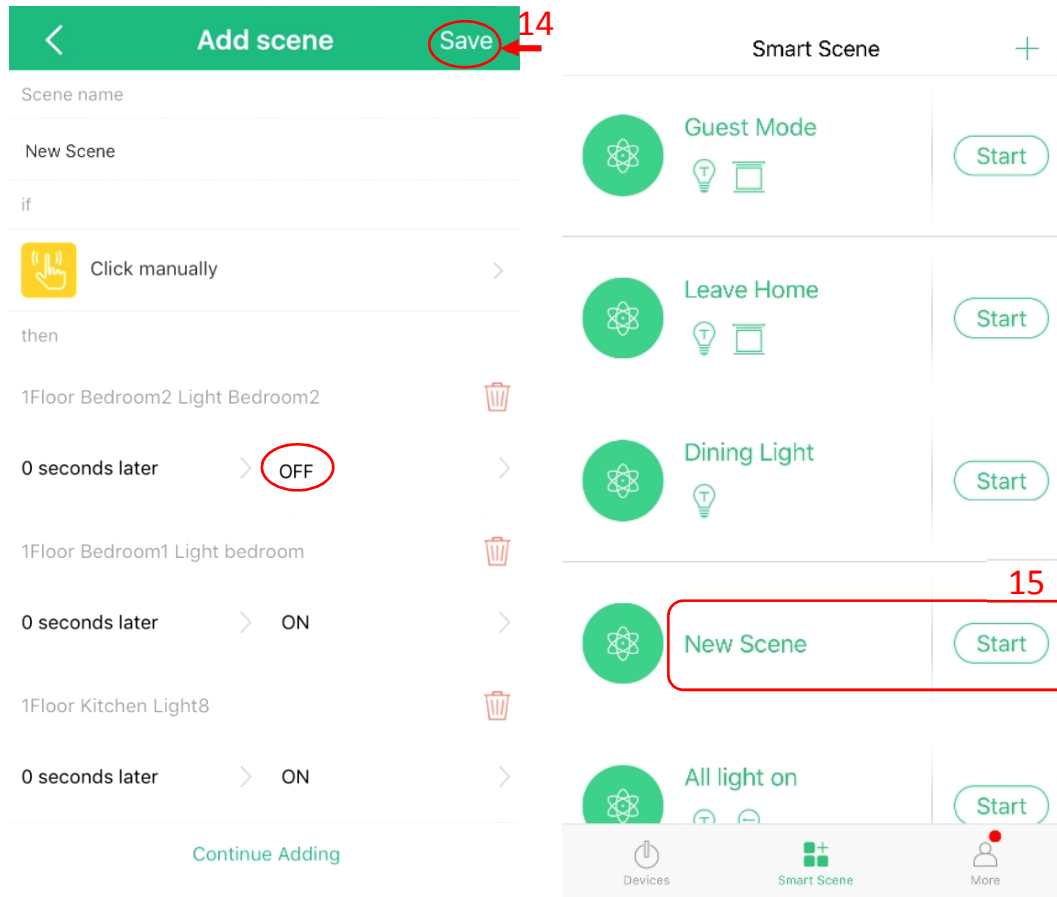
Step 9-10 for adding/modifying the devices in the **{Scene Mode}**

The image displays two screenshots from the Smart Gateway application. The left screenshot shows the 'Add scene' configuration screen. At the top, there is a green bar with a back arrow, 'Add scene', and 'Save' buttons. Below this, there are fields for 'Scene name' (containing 'smart scene1') and 'if' (containing 'if'). A yellow '+ Add start condition' button is visible. Under the 'then' section, a grey '+ Add task' button is circled in red with a red arrow and the number '8' pointing to it. The right screenshot shows the 'All Rooms' screen. It features a green top bar with a back arrow (circled in red with a red arrow and the number '10'), 'All Rooms', and a refresh icon. Below the bar is a list of light devices, each with a lightbulb icon, a name, a location, and a toggle switch. The 'Hall Light' (Unknown room), '2F walkway light' (Unknown room), and 'Light15' (Unknown room) entries have a green checkmark in a red circle next to their toggle switches, with a red arrow and the number '9' pointing to each. Other devices listed include Dining Light, Entrance Light, 2F family hall light, 2F staircase light, Test Light1 (1Floor Living Room), Kitchen Light (1Floor Kitchen), and BathLight (Unknown room).

Step 11-13: Set the Device Action (ON/OFF).

Add scene	Set an action	Set an action
Scene name		
Go to New Scene	ON <input checked="" type="checkbox"/>	ON <input type="checkbox"/>
if		
 Click manually >	OFF <input type="checkbox"/>	OFF <input checked="" type="checkbox"/> ¹²
then		
1Floor Bedroom2 Light Bedroom2 	On / off auto-flip <input type="checkbox"/>	On / off auto-flip <input type="checkbox"/>
0 seconds later > ON ¹¹ >		
1Floor Bedroom1 Light bedroom 		
0 seconds later > ON >		
1Floor Kitchen Light8 		
0 seconds later > ON >		
Continue Adding		

Step 14: Save the new **{Scene Mode}**



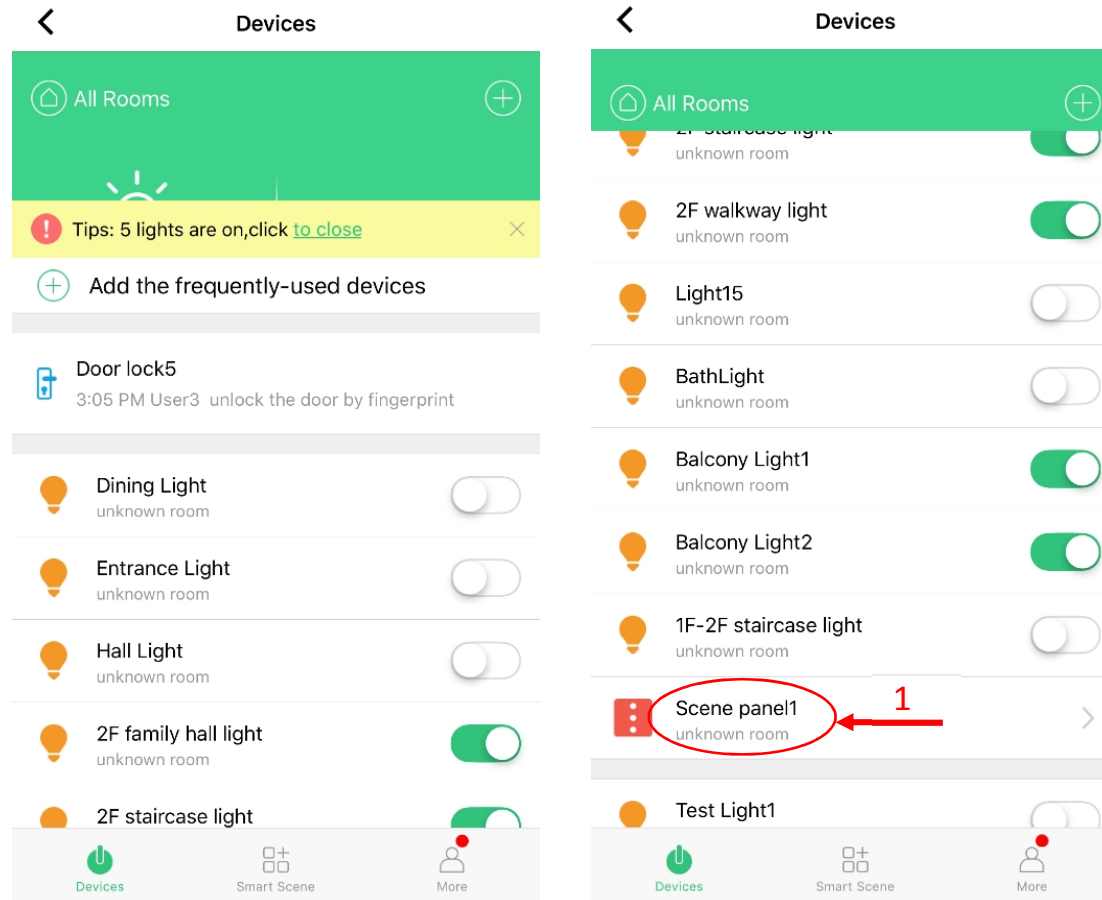
{Scene Mode} has been created

4. Test the new **{Scene Mode}**, Click the Step 15 to activate the mode.

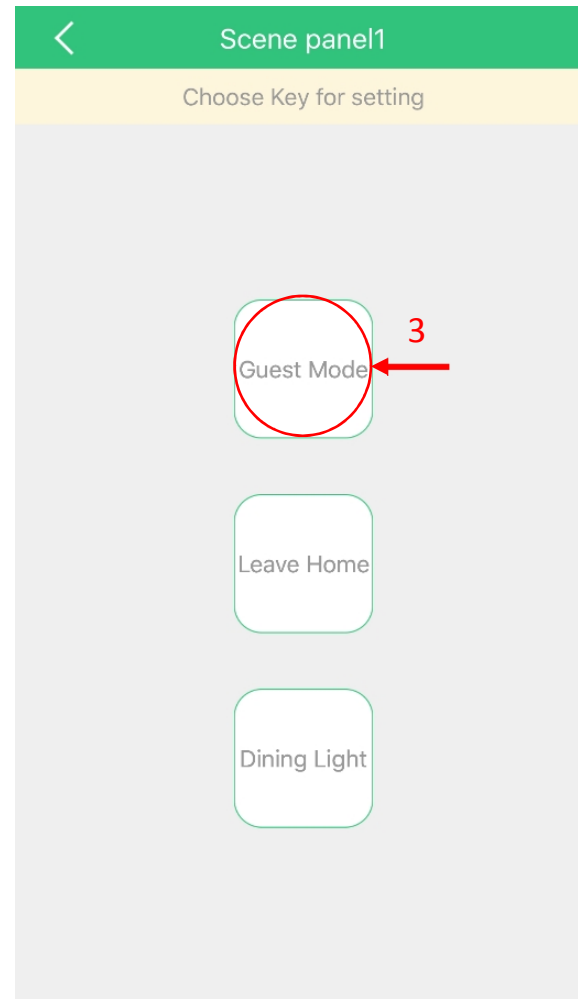
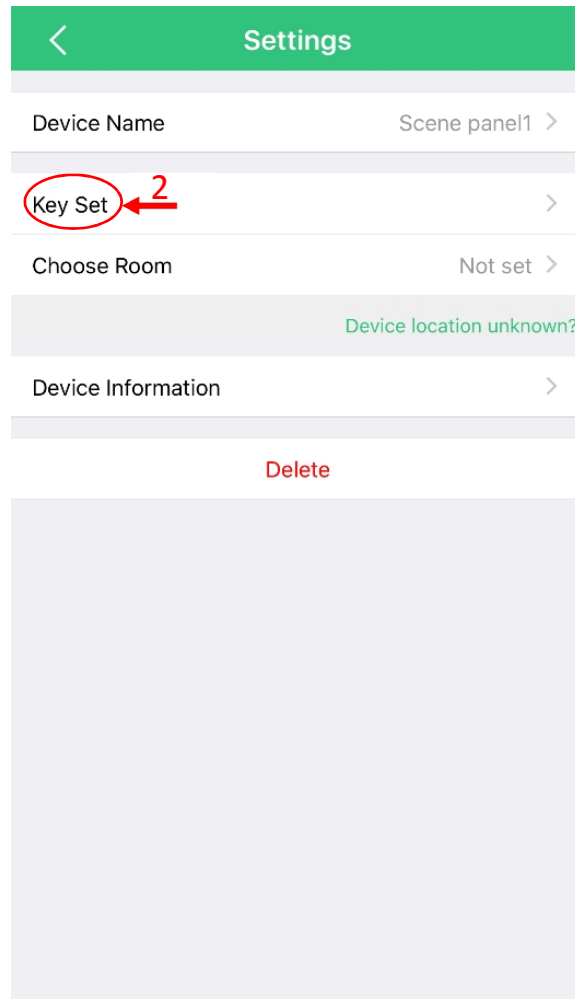
Attach {Scene Mode} to the [Scene Switch]

Before this section, make sure the {Scene Mode} has been created which you are willing to attach.

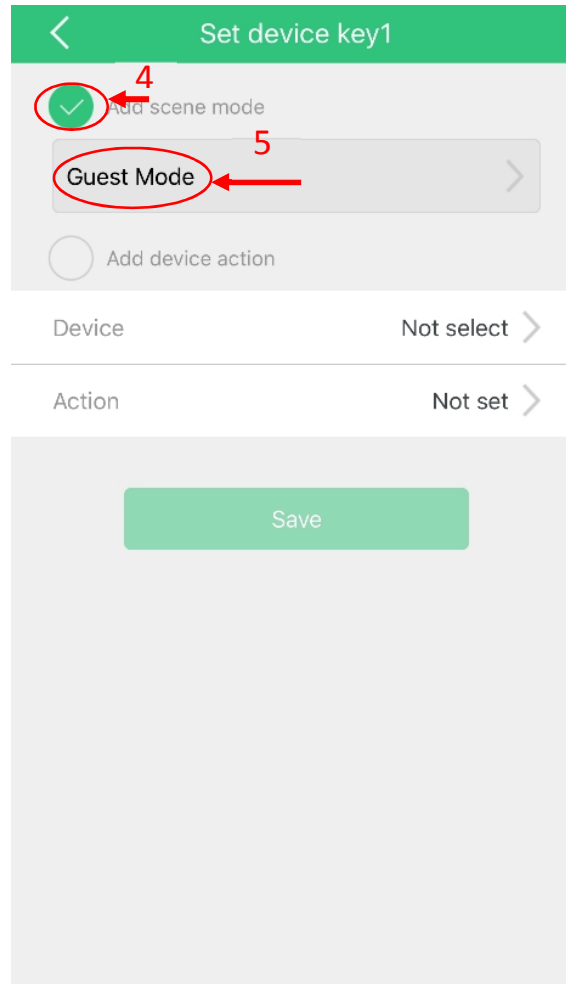
1. Open the Smart Home Main Menu, and scroll down to show the “Scene Panel”: Step1



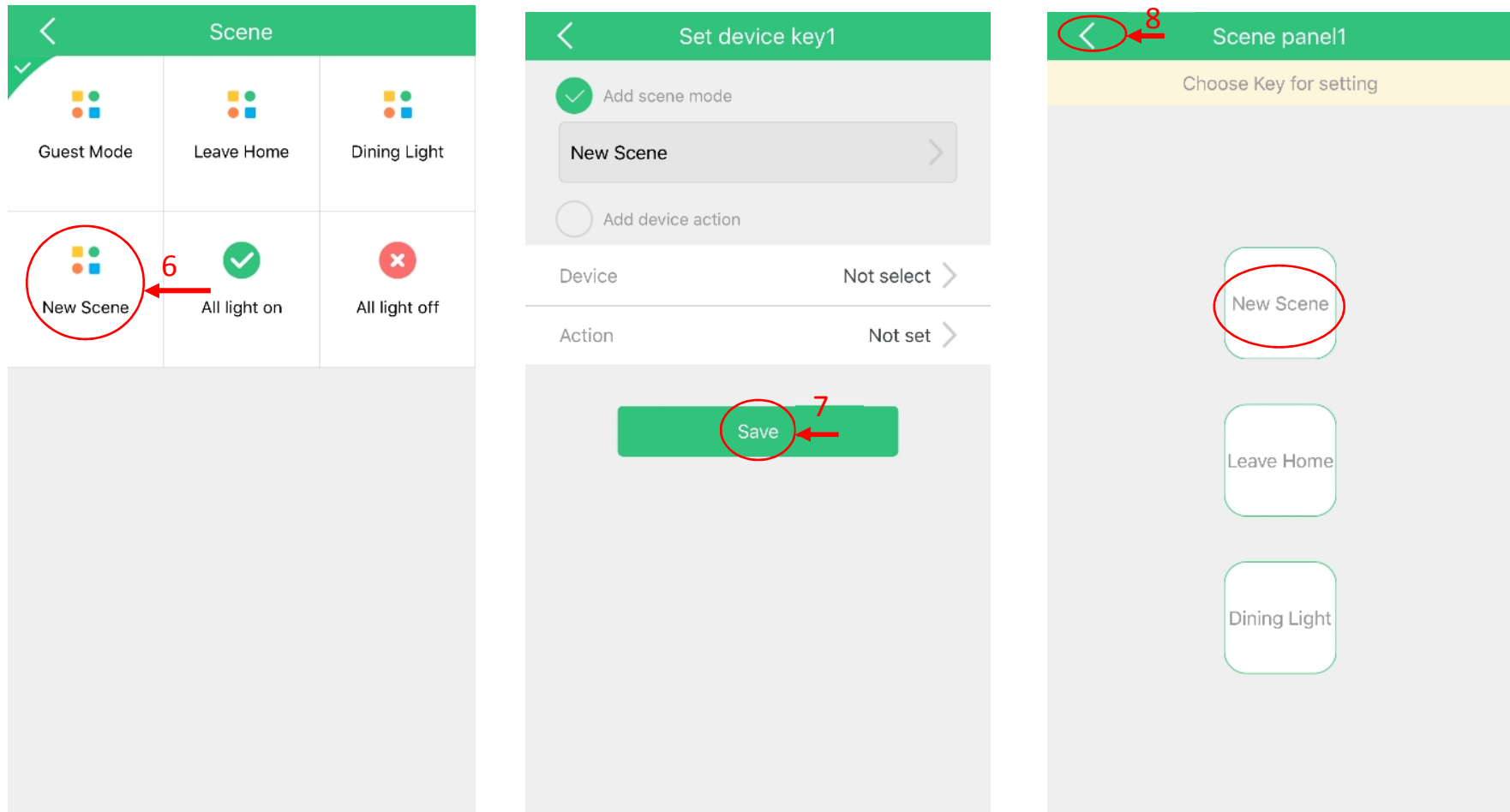
2. Step 2: Select the **[Scene Switch]** button to set the scene: Step 2-3



3. Tick the “Scene Mode”: Step 4
Click the Step 5 to select/change the **{Scene Mode}**,



4. Select the **{Scene Mode}**, you are willing to attach to the button: Step 6, and save this action: Step 7



5. Step 8: to finish the **{Scene Mode}** attaching procedure.

6. The **{Scene Mode}** has been successfully attached (select/change) to the button.

7. Test the **{Scene Mode}** on the **[Scene Switch]**: Press the Step 9 to apply the action.



[Scene Switch]: beside the main door

8. To attach the other **{Scene Mode}** to the rest of button of **[Scene Switch]** from Step 1.