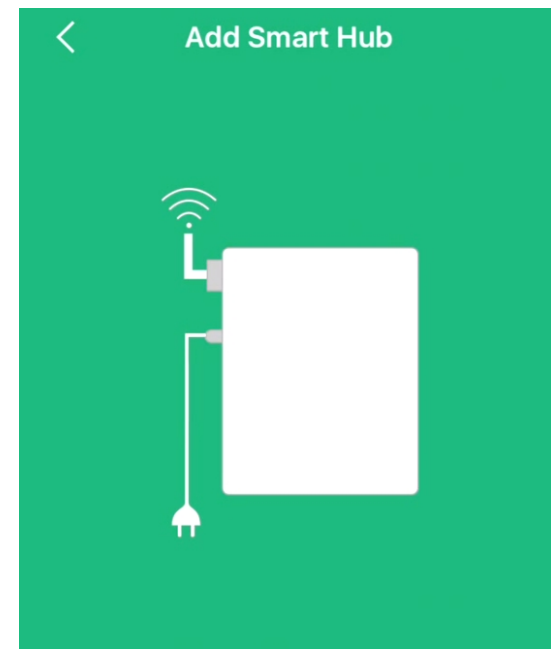
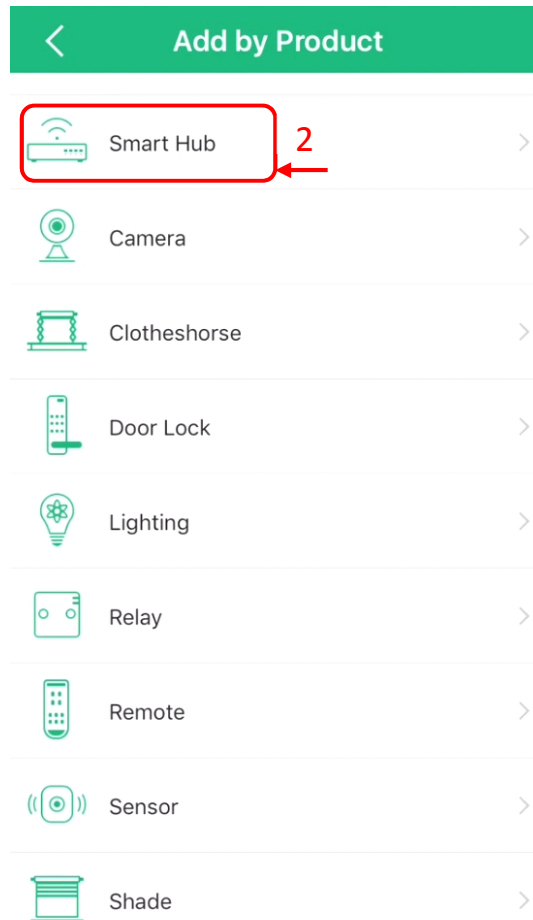
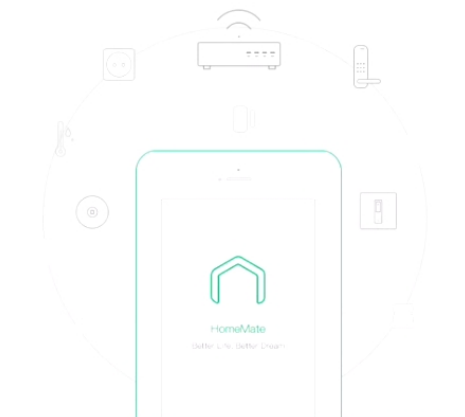
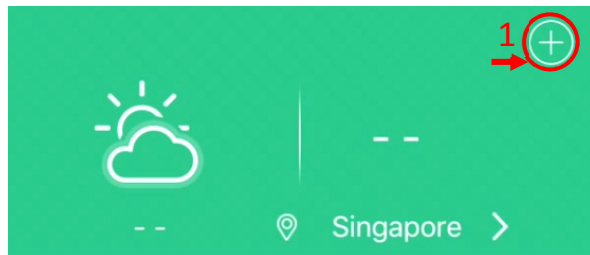
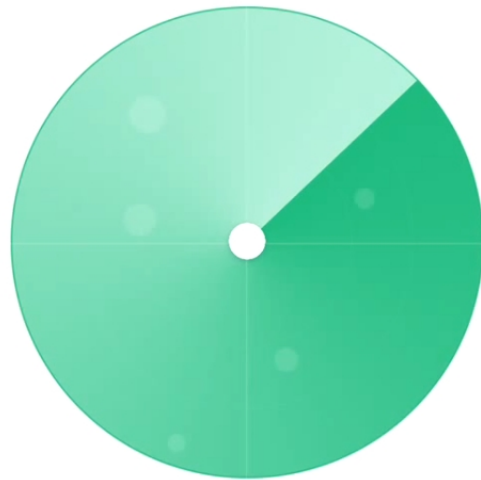


Adding Devices

Adding Hub: Step 1-4



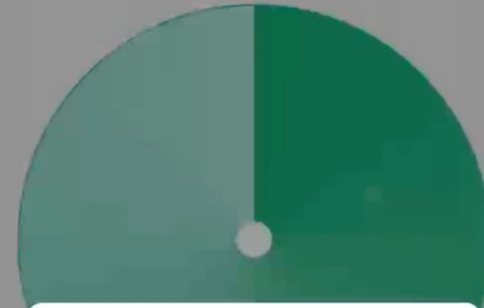
1. Access Smart Hub into network and power on
2. Start to add more devices (which are in the configuration mode) after the Smart Hub is added



Adding Smart Hub, please wait...

249s

Cancel



Is adding other devices

End adding

4

Continue add

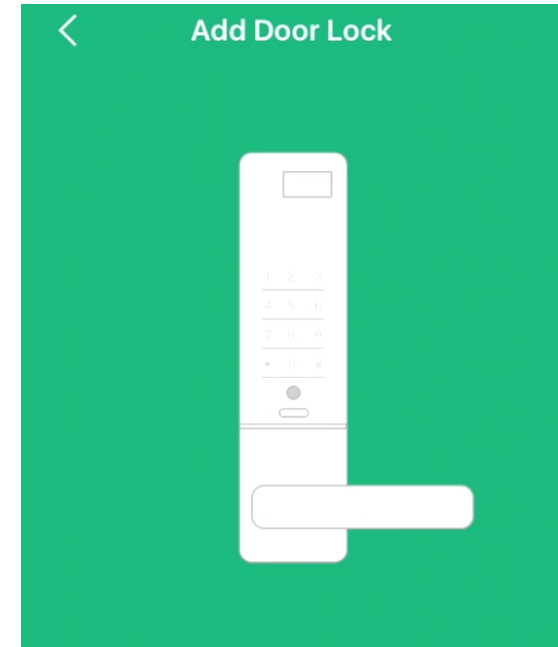
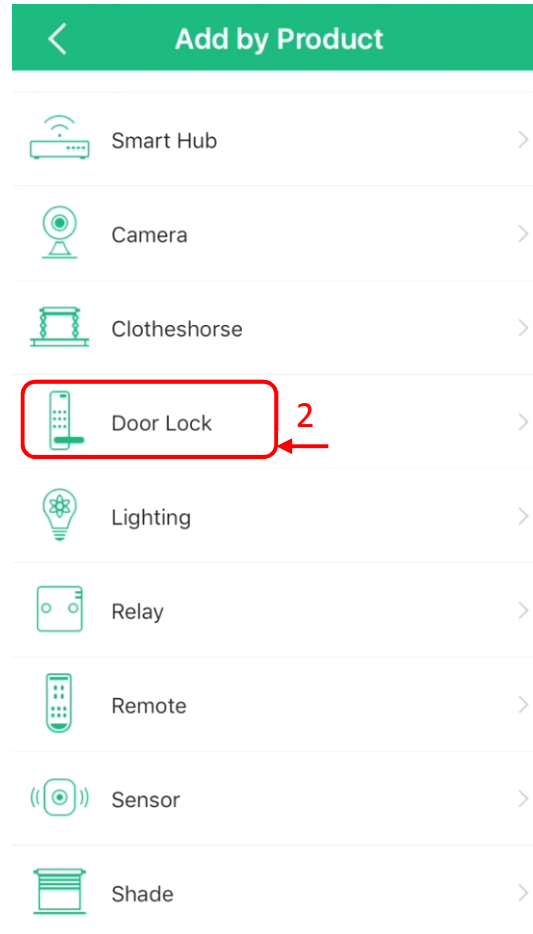
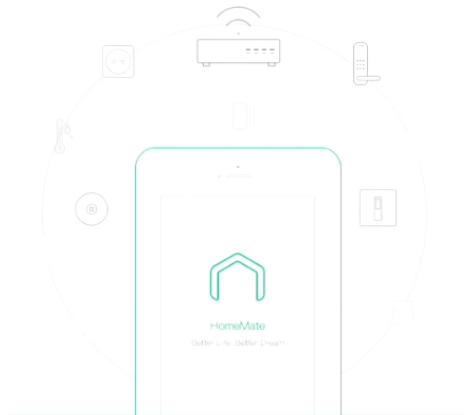
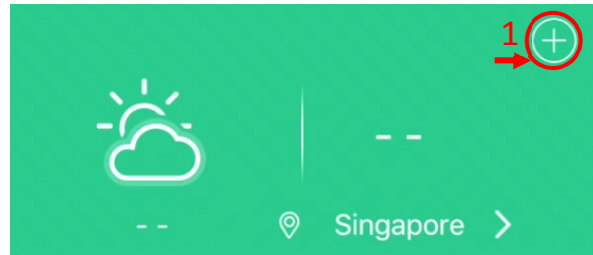
Smart Hub has been added, more devices can be added in the countdown.

245s

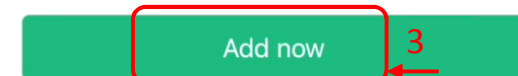
Only support a Smart Hub in an account

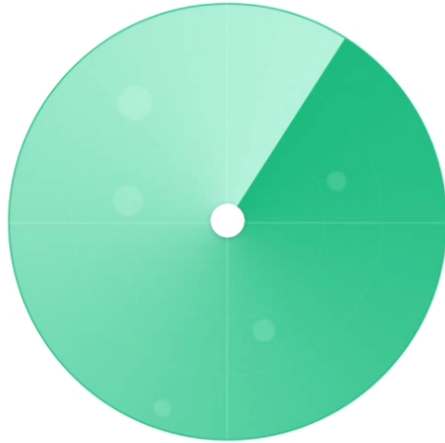
Done

Adding Lock: Step 1-7

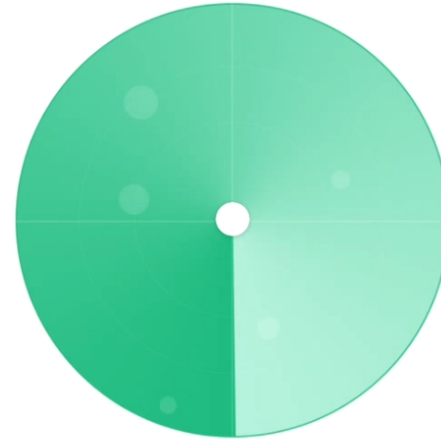
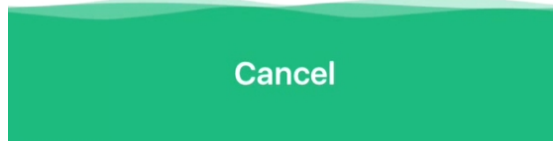


Put in battery, wait for until red light flashes

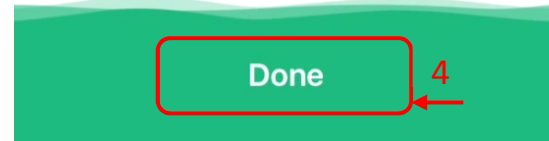


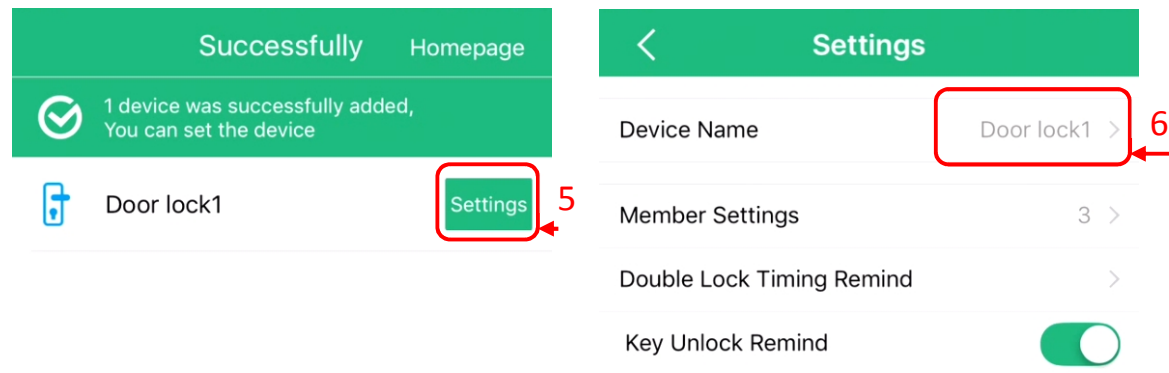


Adding device...
250s



1 device is added
235s





< Device Name

Door lock

Save

7

"lock" locked locks

q w e r t y u i o p

a s d f g h j k l

⬆ z x c v b n m ⬅

123 🌐 🗣 space Done

< Settings

Device Name Door lock >

Member Settings 3 >

Double Lock Timing Remind >

Key Unlock Remind ☒

Save successfully

+

☁ --

-- 📍 Singapore >

🔑 Door lock

🚪 Door sensor 13:34 Close

📶 Motion sensor 13:32 someone is passing

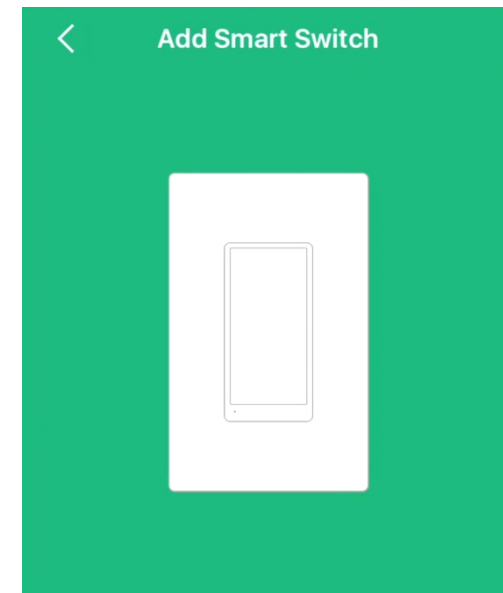
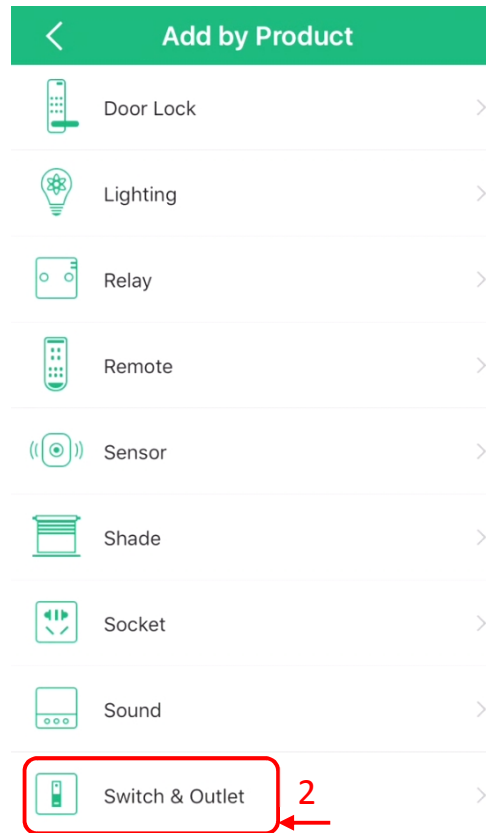
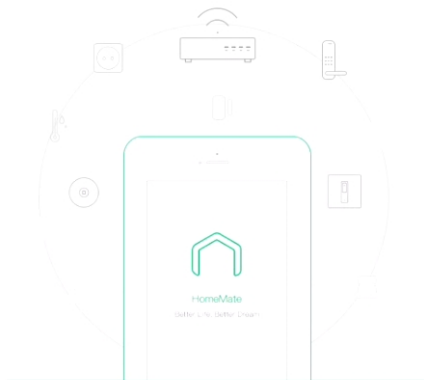
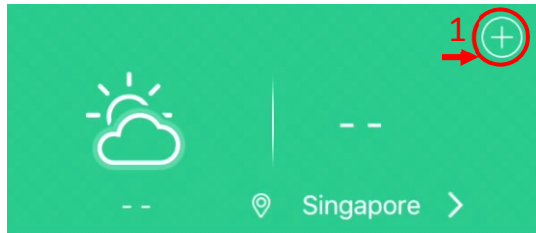
💡 Light Bedroom2 ☐

💡 Light Bath ☐

💡 Light bedroom ☐

💡 Light7 ☐

Adding Switch: Step 1-8



Connect to power, wait for until the light flashes.

