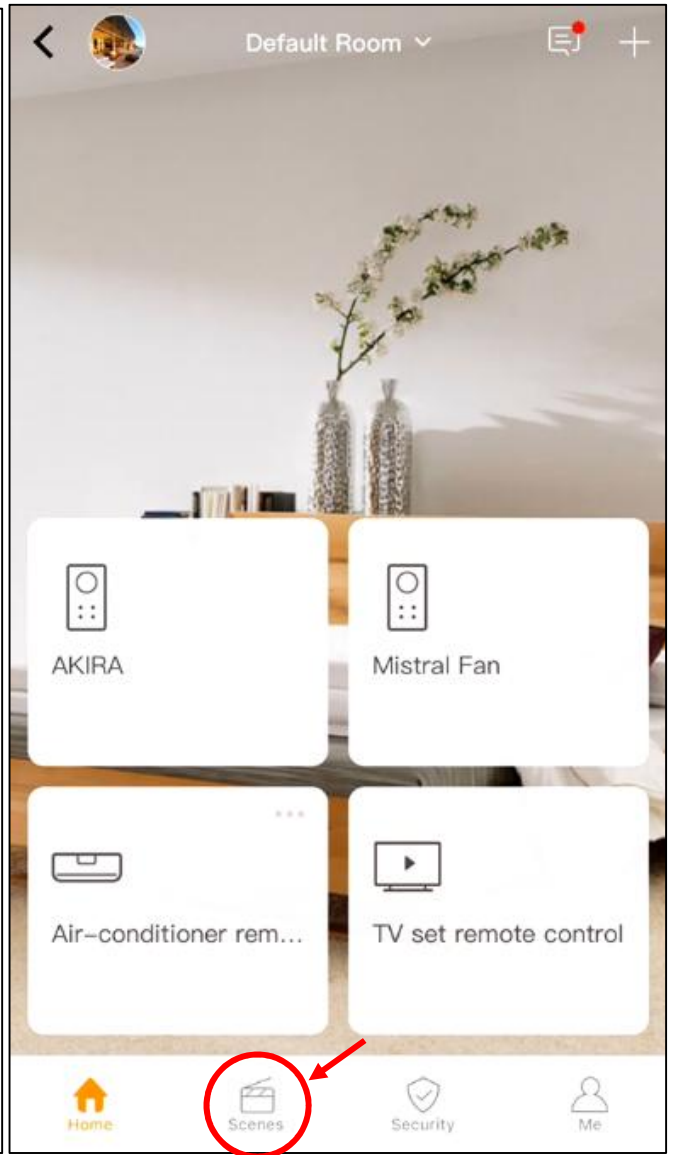
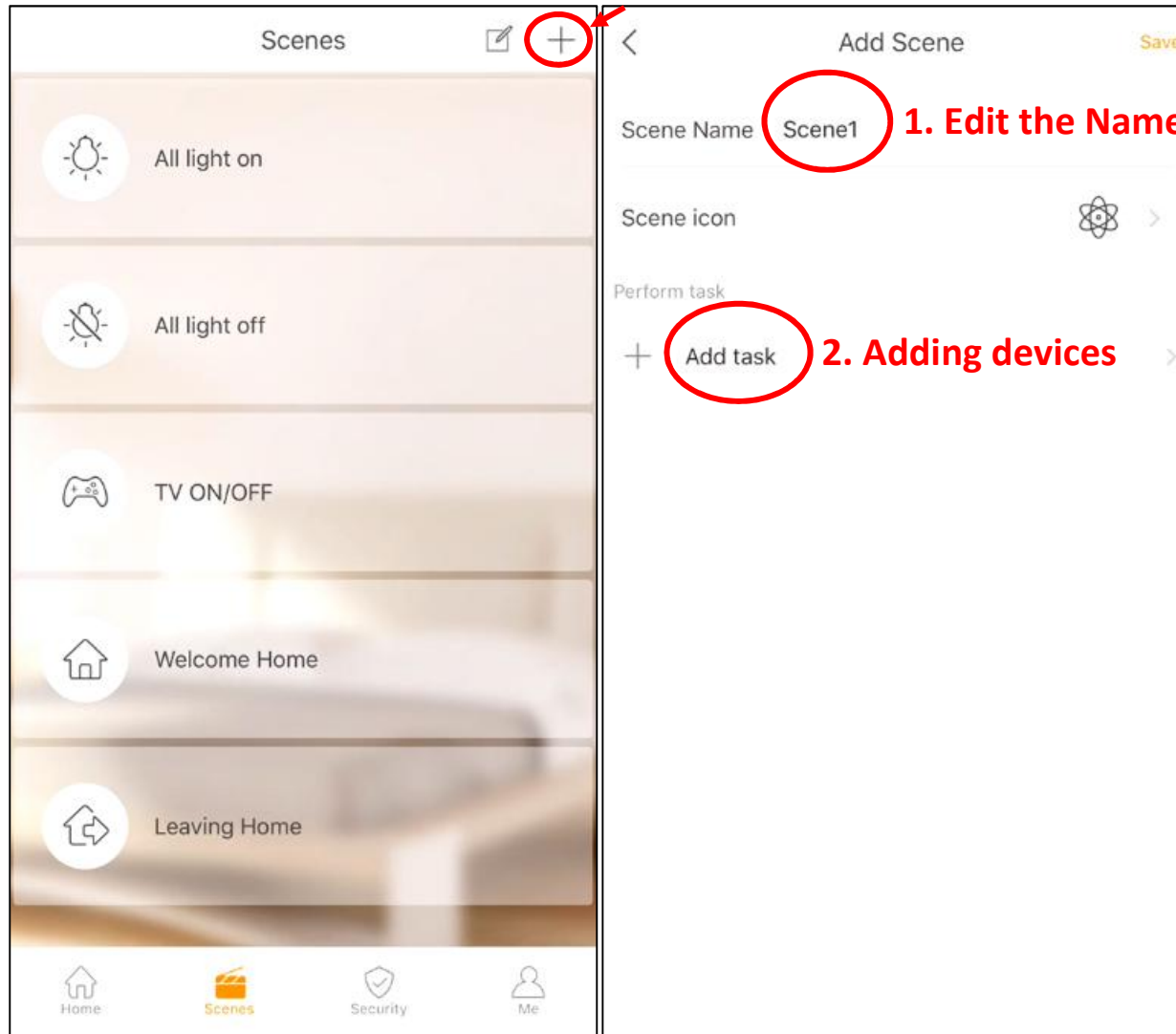


Create a Scene Mode

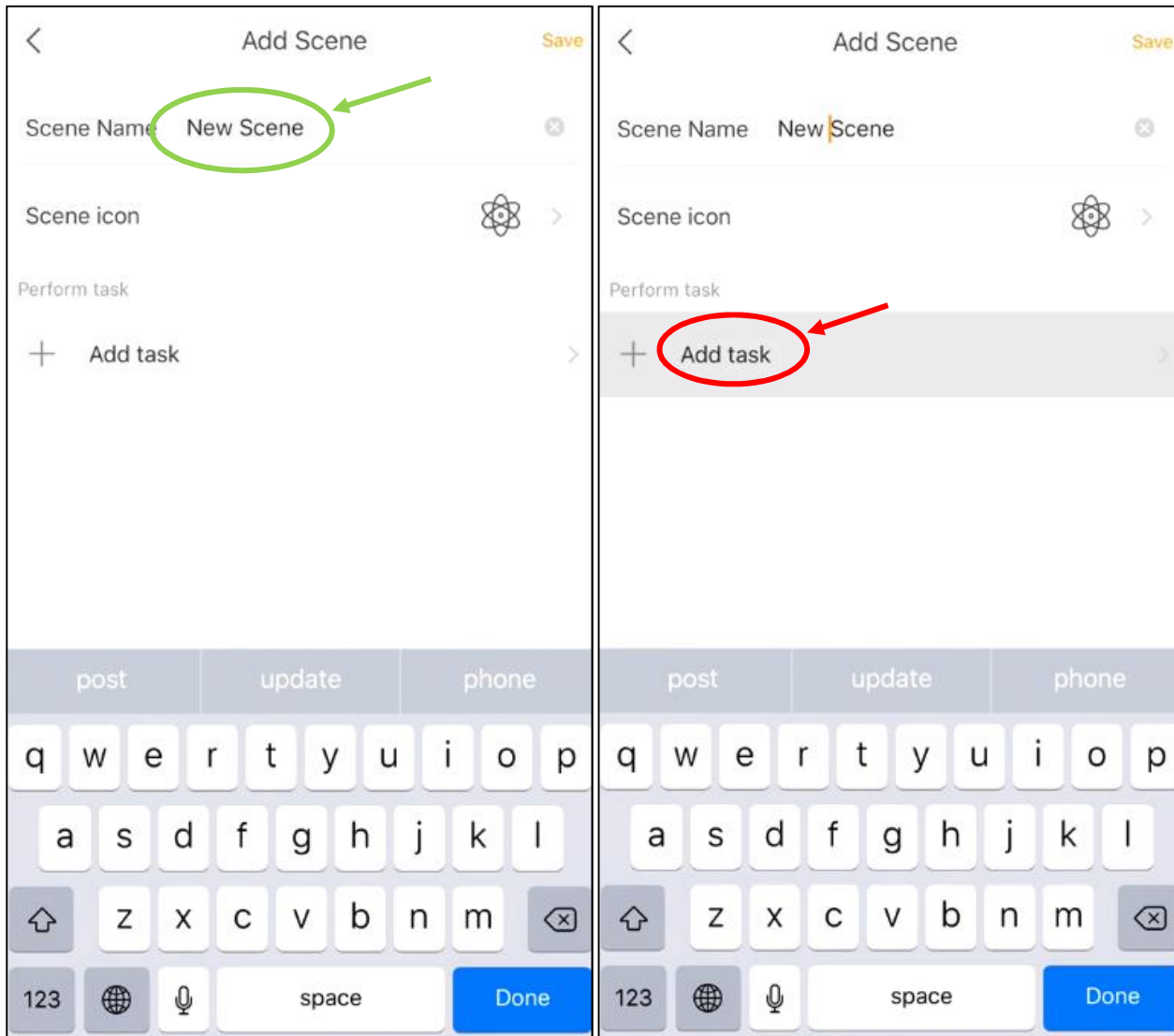


Turn to Scene Setting page.

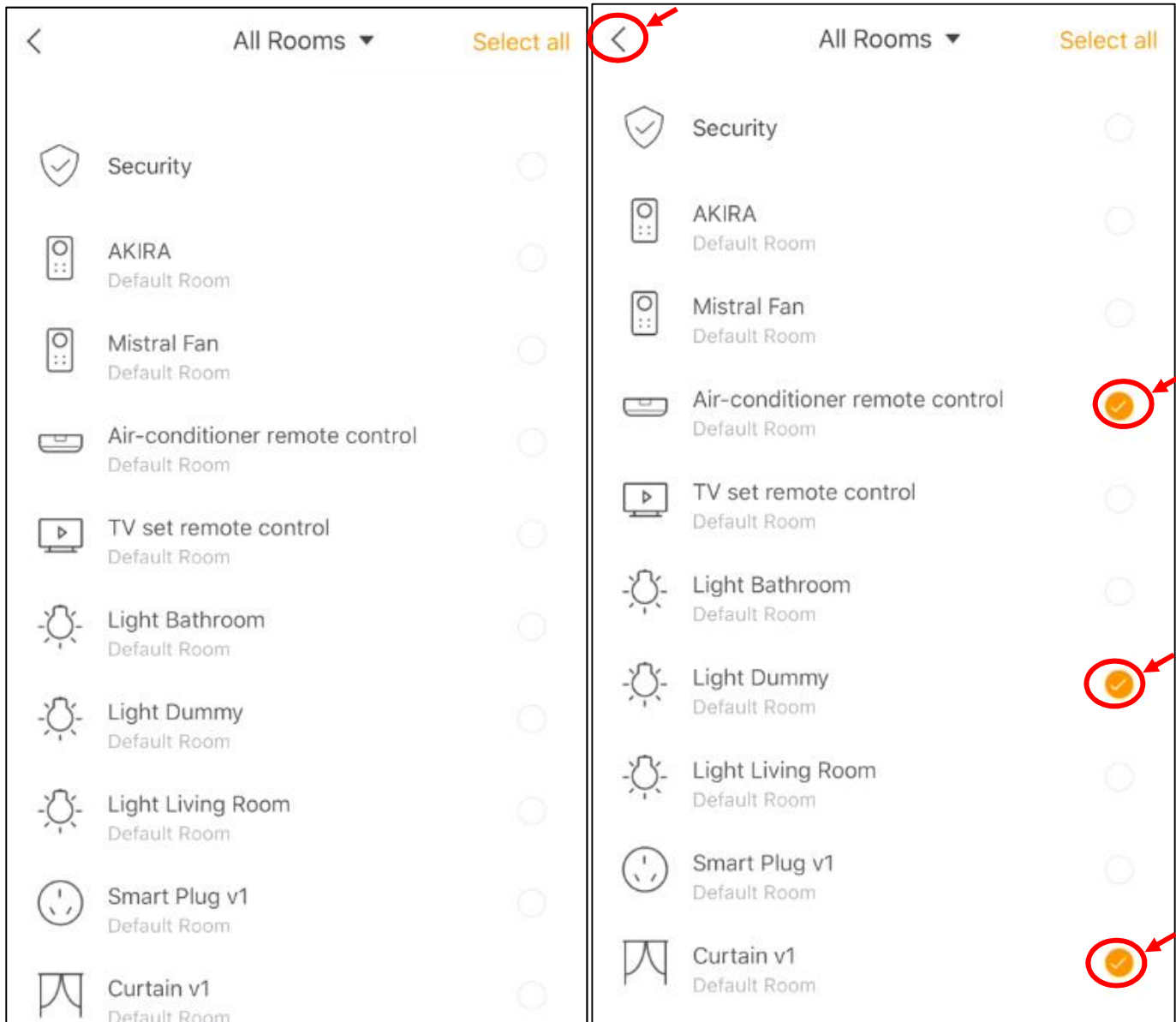


Click “+” for creating new scene, then you have to add two items.

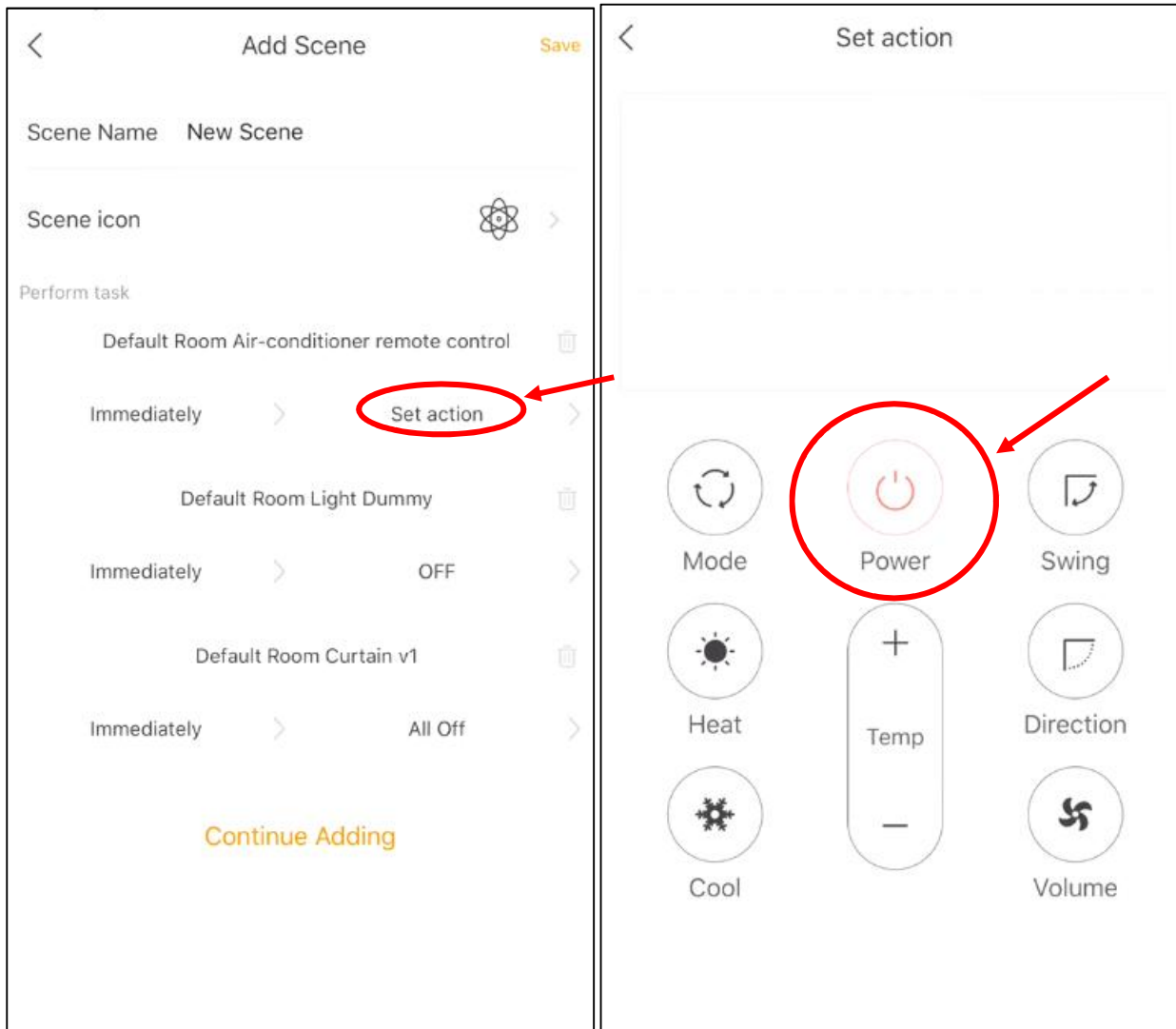
1. Scene Name.
2. The device you would like to control.



1. Scene Name has been added.
2. Click "Add task" for adding the devices.



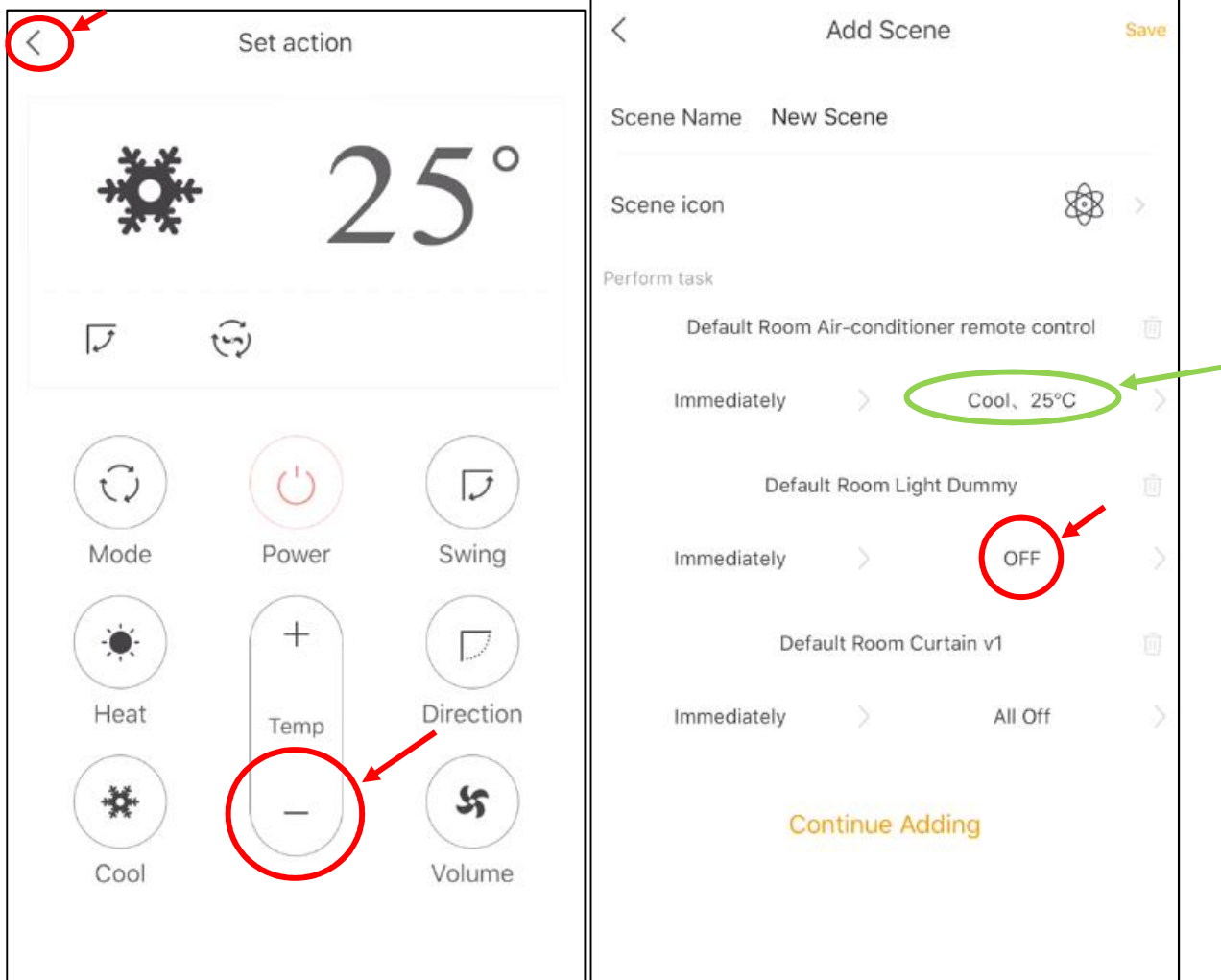
1. Tick the device you would like to add.
Sample: 1. Air-con, 2. Light, 3. Curtain.
2. Click back from top left to set Action.



Action setup: Click "Set Action" at Air-con section.

1. AC:

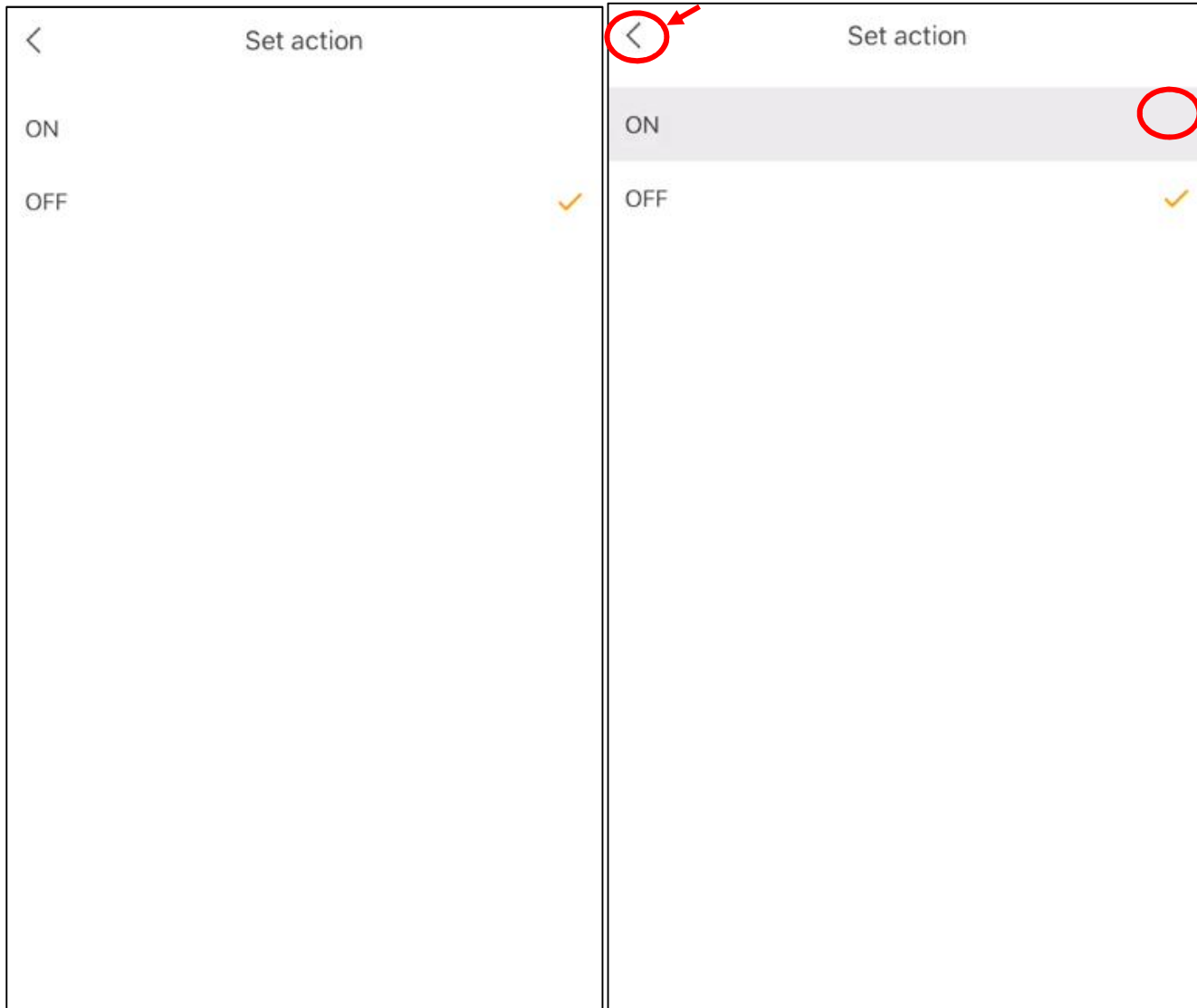
Power ON: click power icon.



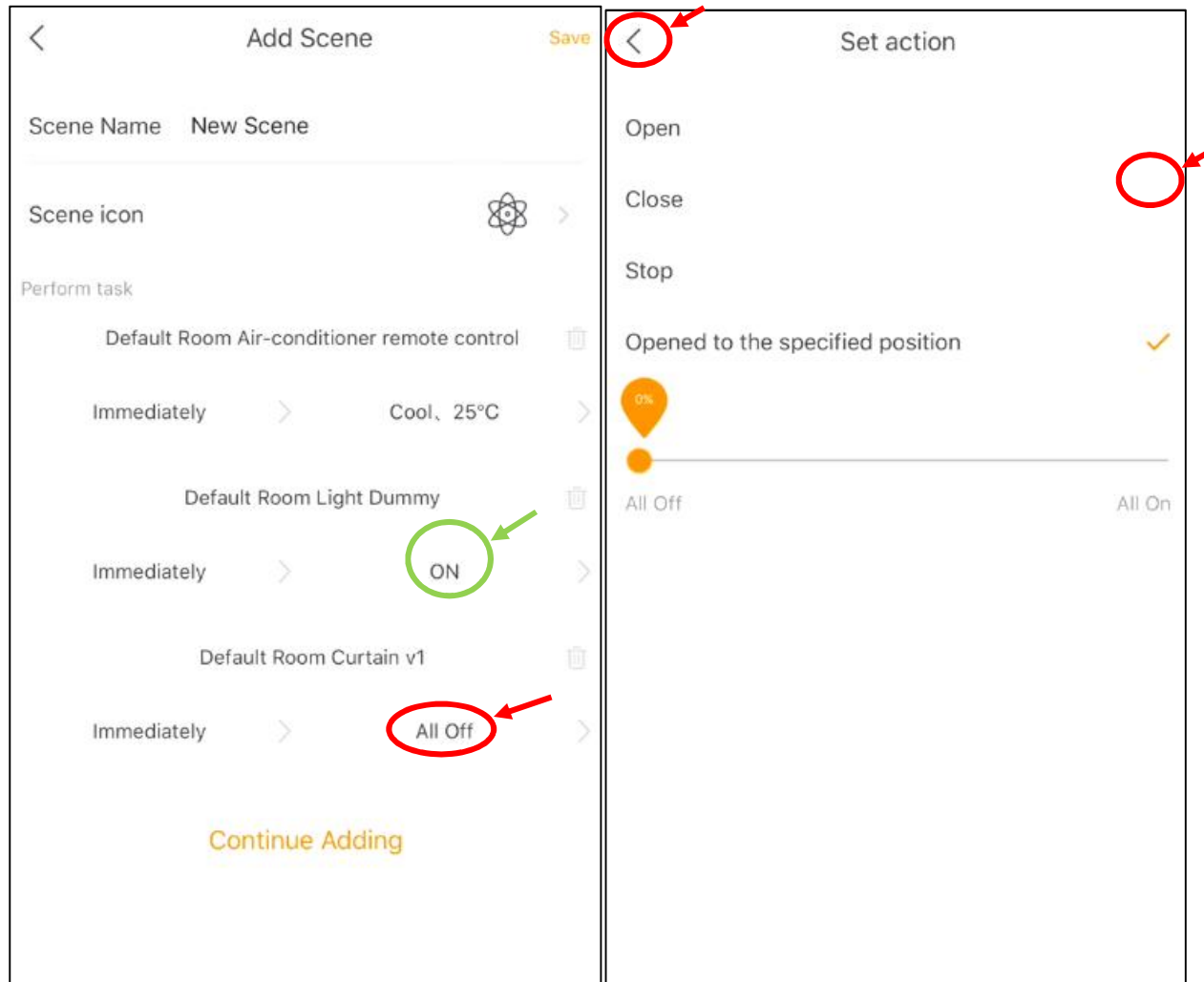
Click “-“to set temperature to 25°C, the Air-con action section is showed as green circle.

2. Light:

Click “Light” action section.



Tick "ON" then click back to set next device action.



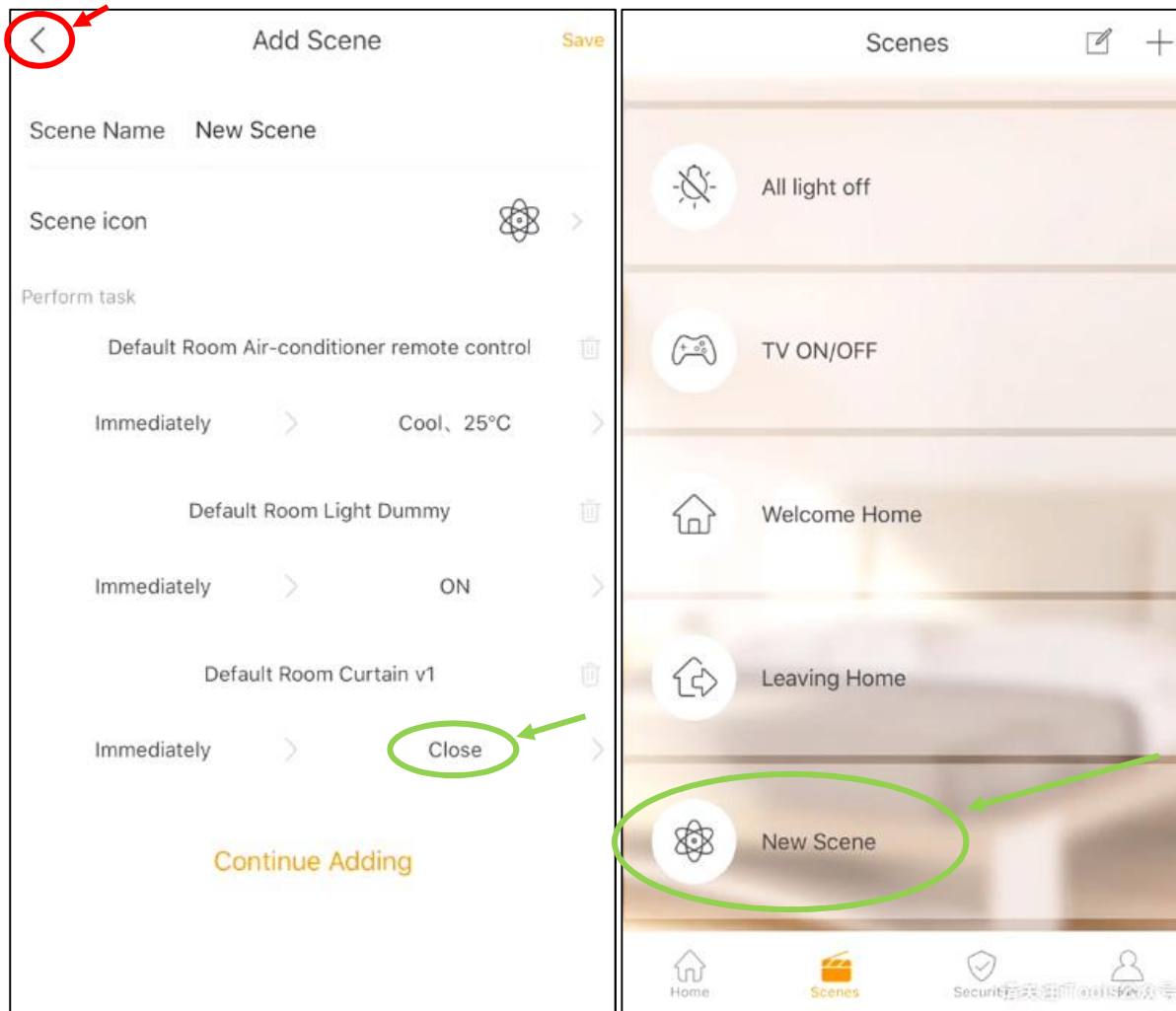
The Light action section set as green circle showed.

3. Curtain:

Click Curtain action section.

Tick "Close".

Go back.



Curtain action section is showed as green circle.

Now 3 devices action have been set.

Go back by click top left.

The “New Scene” has been created.