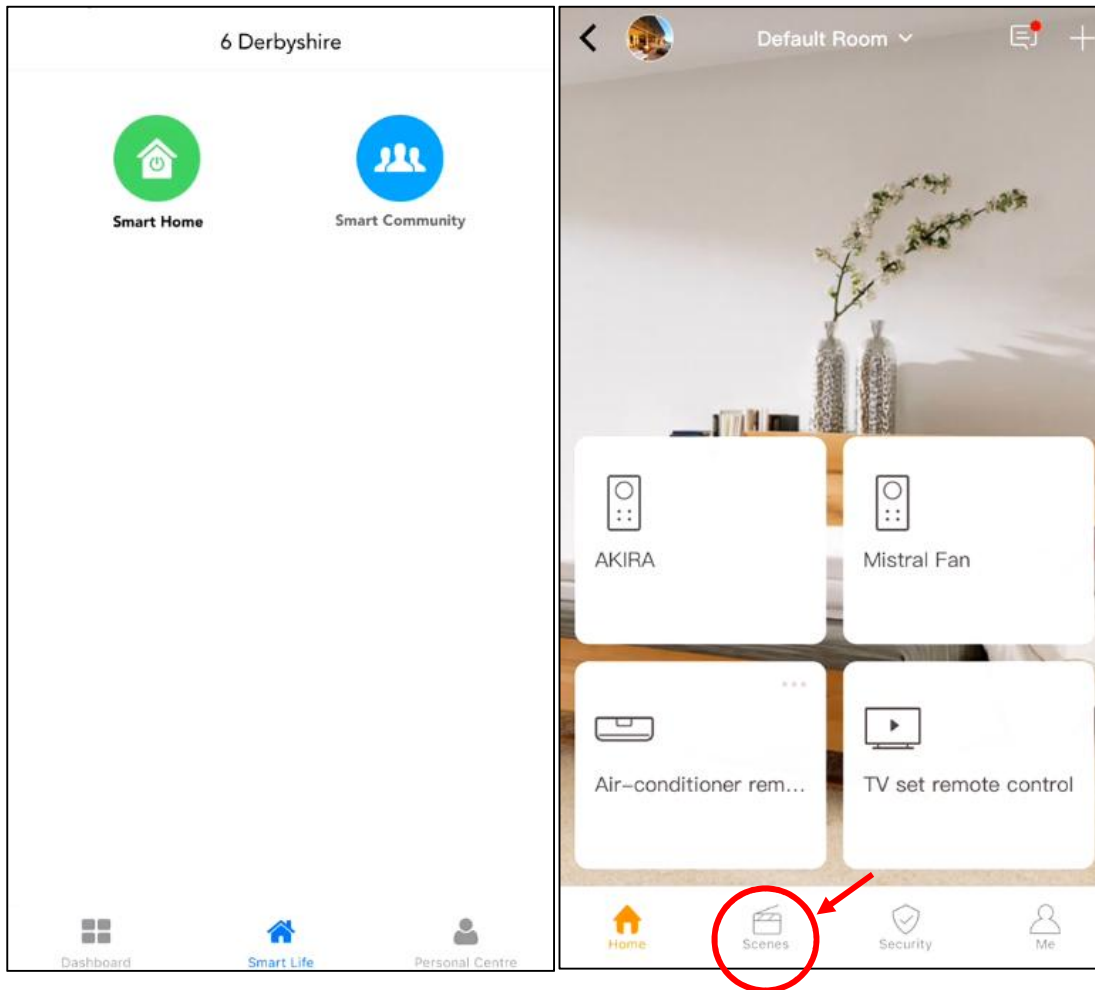
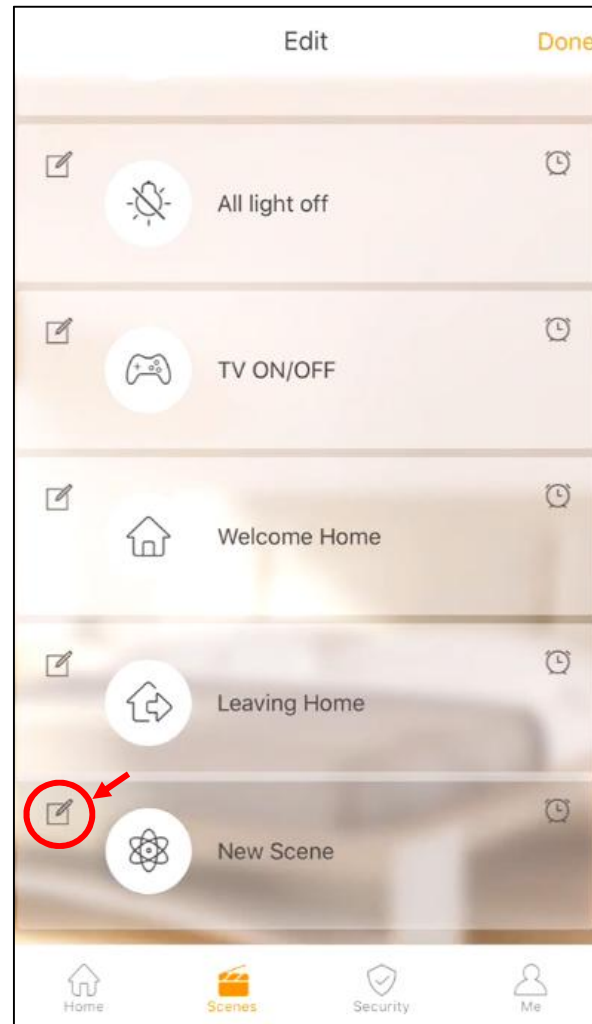
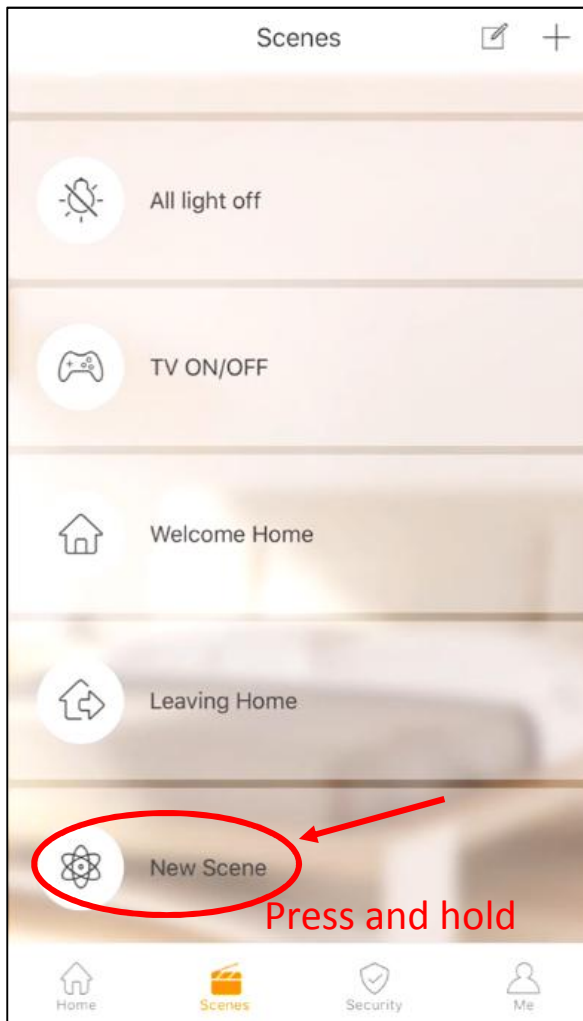


Delete Scene Mode

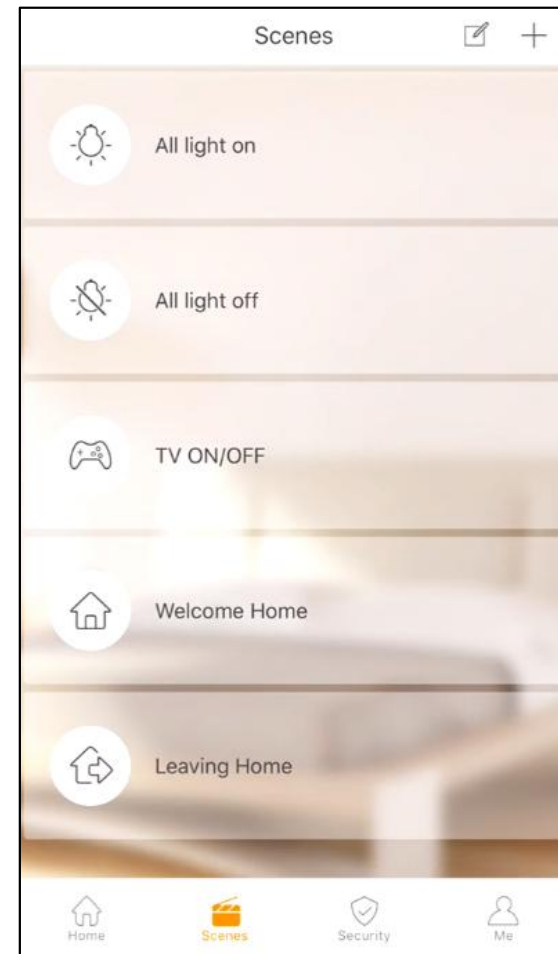
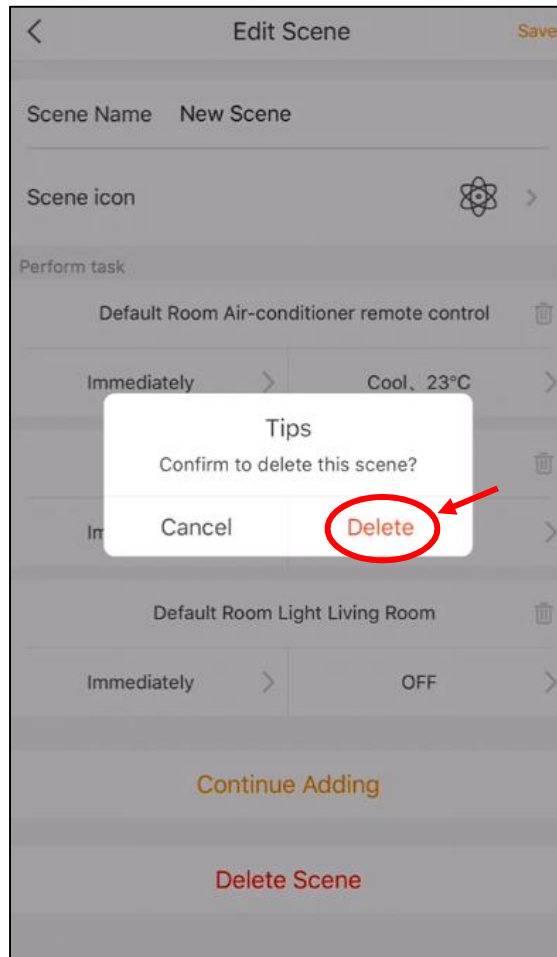
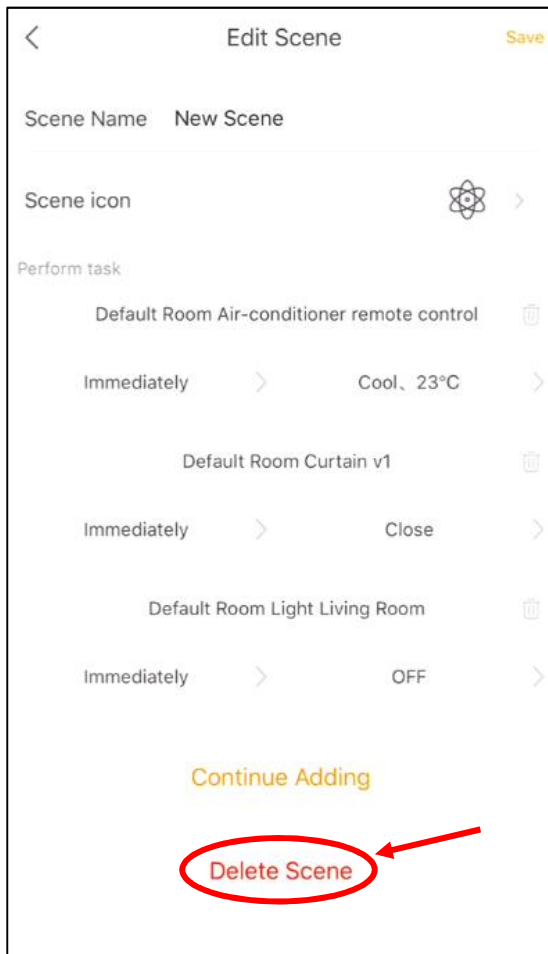


Go to “Scenes” page.

- * 1. This action will affect the [**Scene Switch**] key set.
- * 2. The scene mode cannot be restored after delete action.



1. Press and Hold the “New Scene” until the edit icon showed at top left of scene slide.
2. Click the edit icon to enter the edit mode.



1. Click “Delete Scene” from bottom of app.
2. Click “Delete” to confirm delete.
3. The “New Scene” has been removed from app