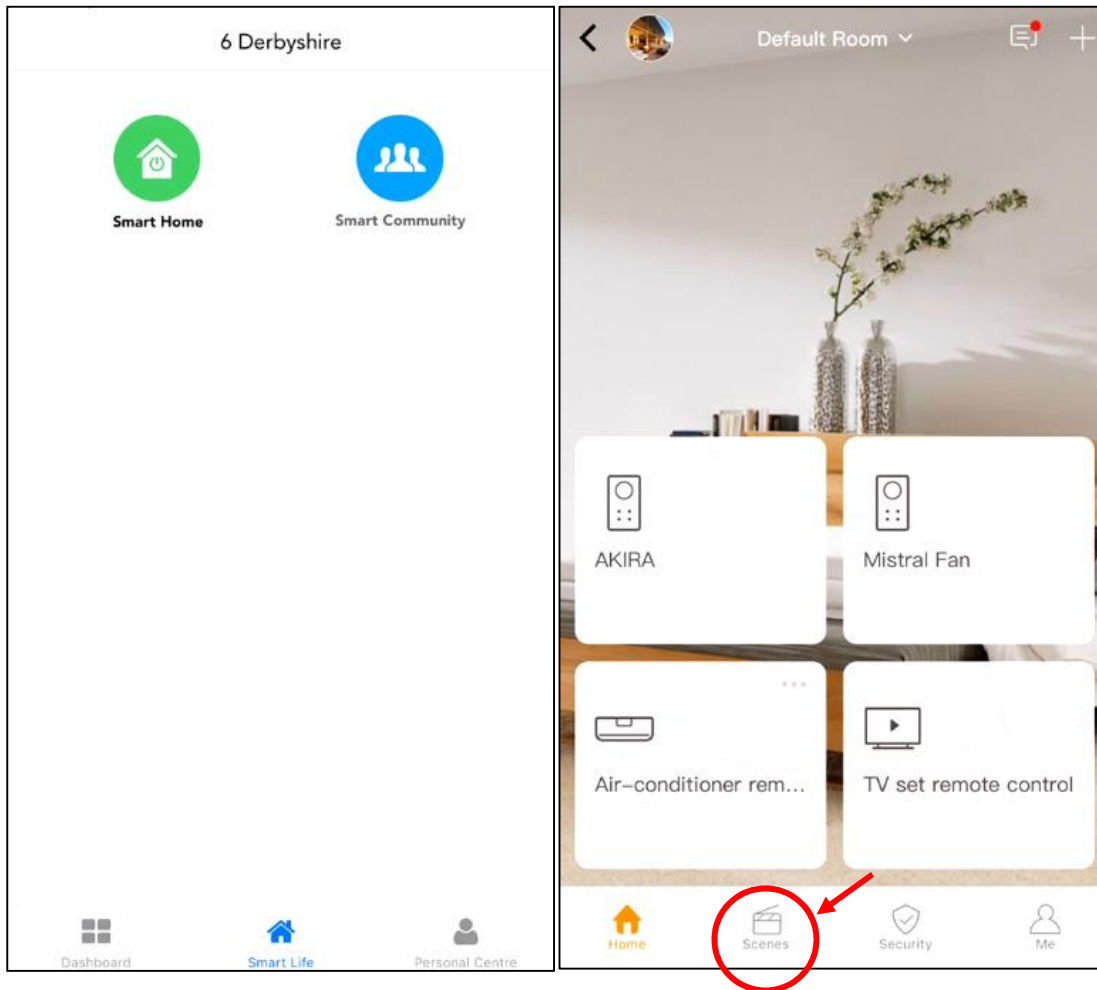
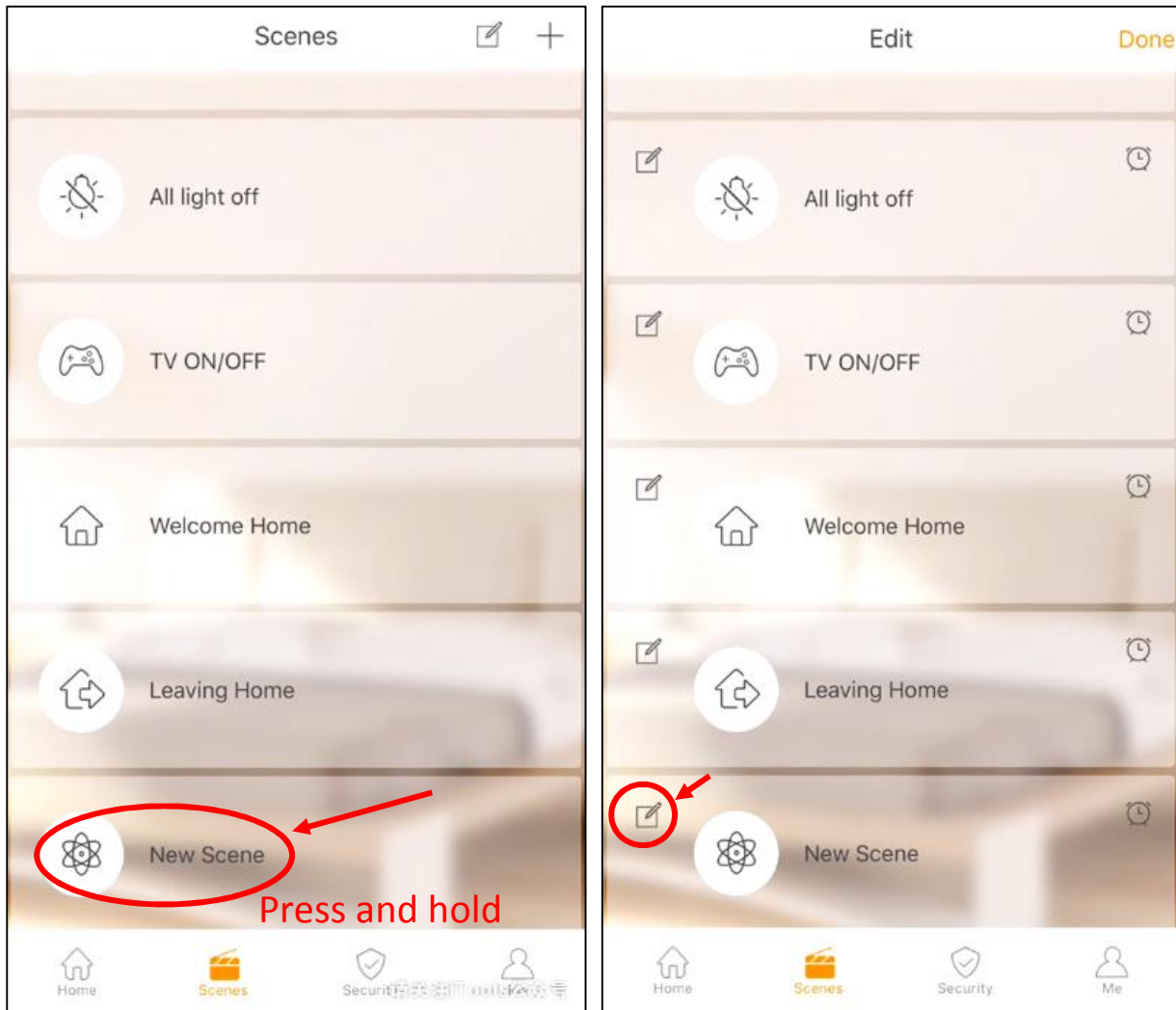


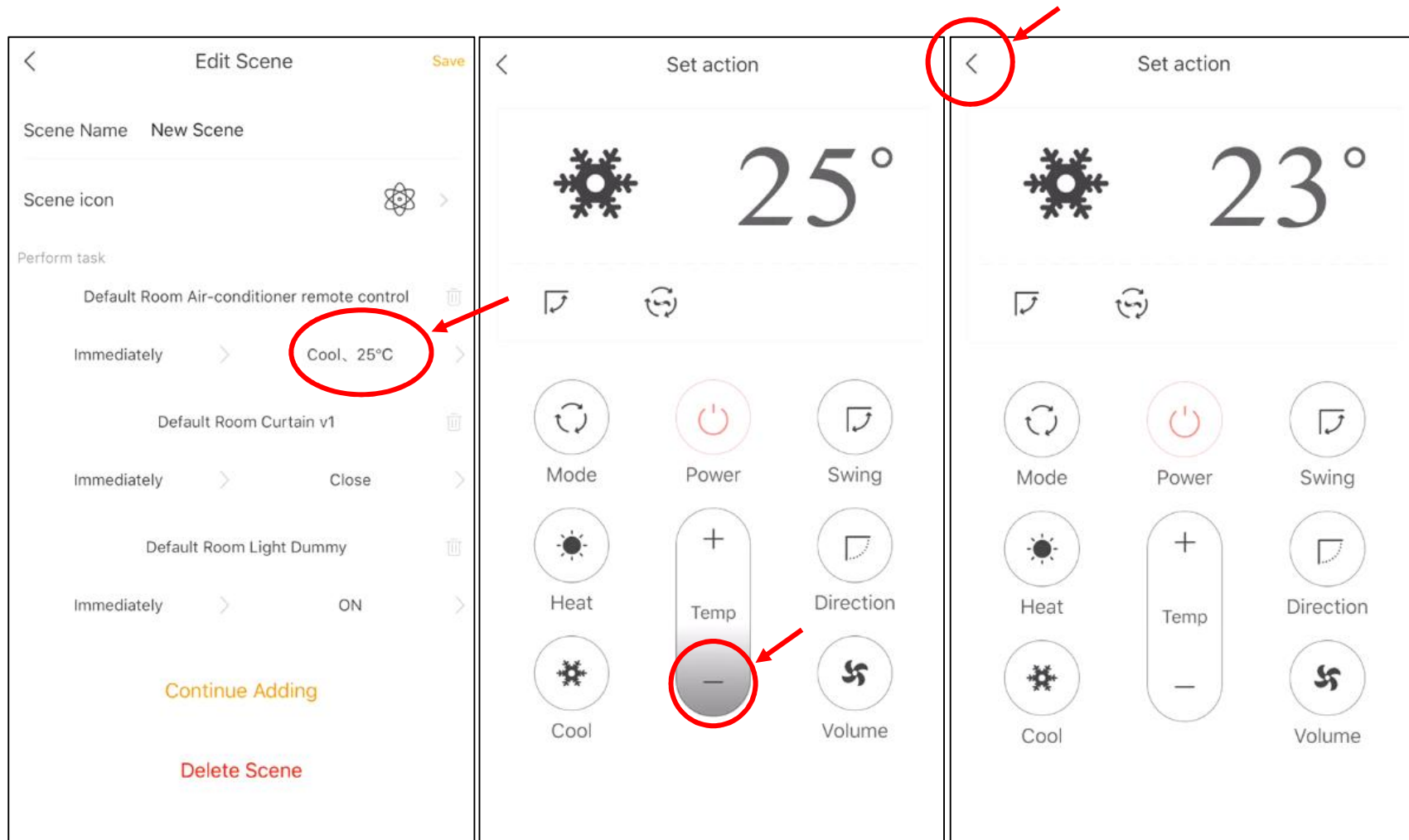
Edit Scene



Go to “Scenes” page.

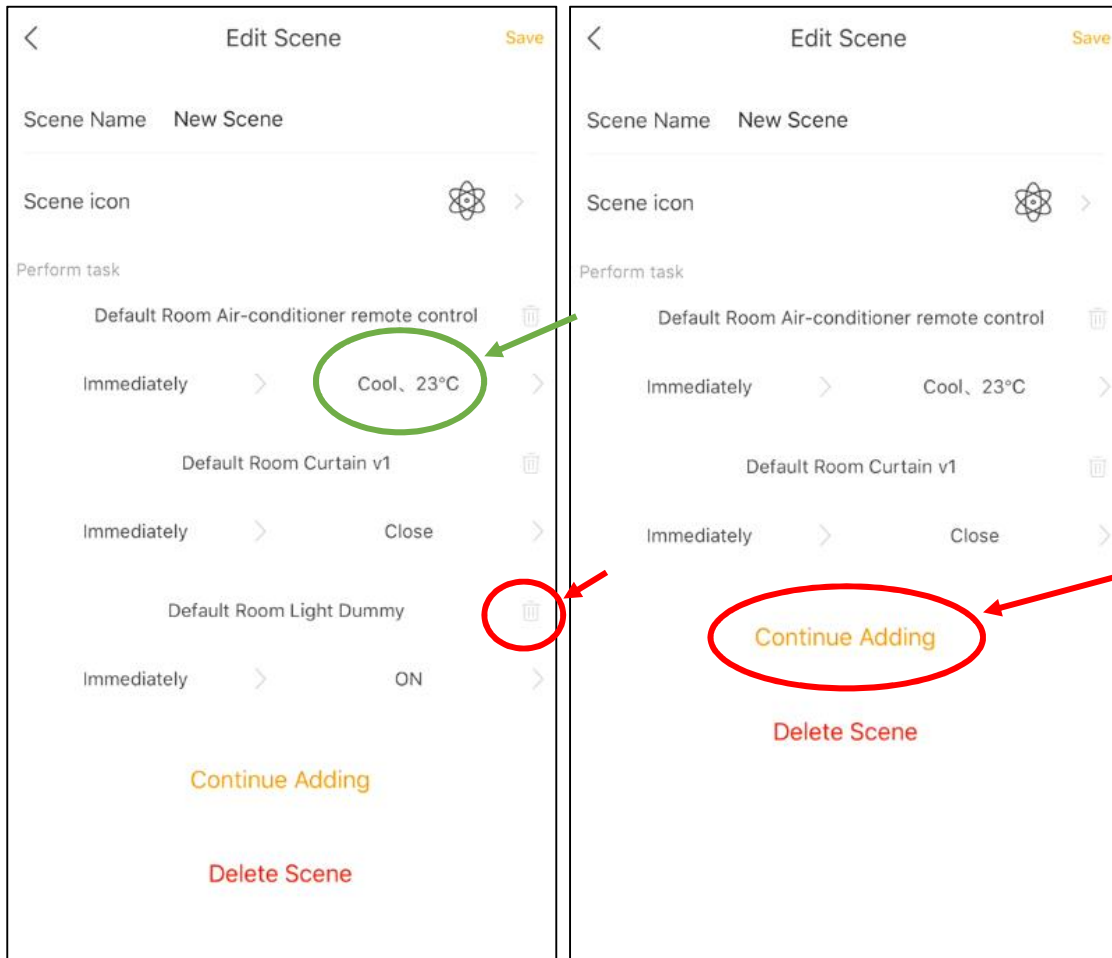


1. Press and hold the “New Scene” until edit icon show up at top left in this scene slide.
2. Click the edit icon to enter the scene edit mode.



**Sample 1:** Change the action (air-con temperature adjustment)

1. Click the Air-con action section
2. Click the “-” to turn down the temperature.
3. Click top left to save the action.



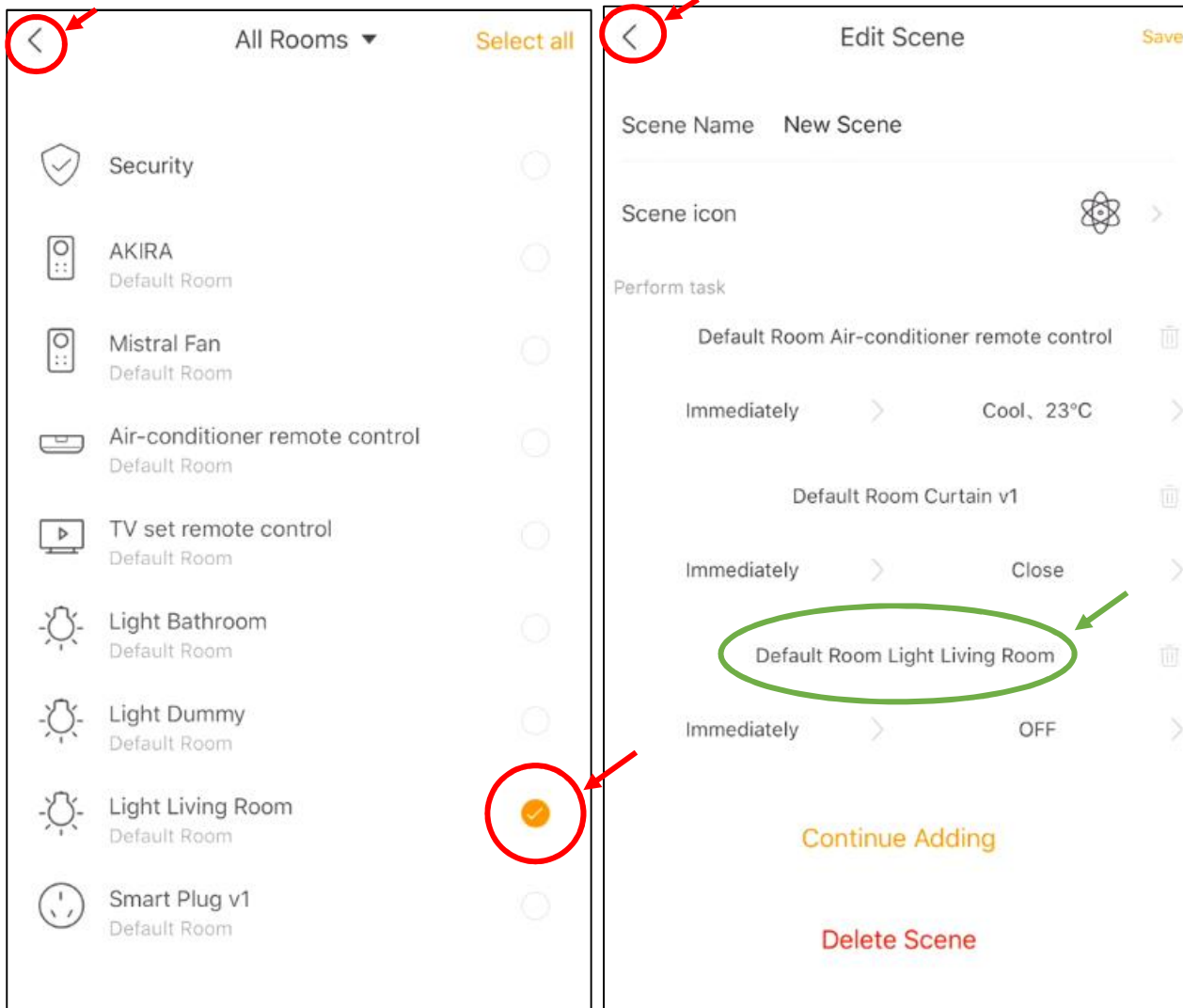
The air-con action is modified as green circle showed

**Sample 2:** Delete one exist device (remove the “Light Dummy” from scene)

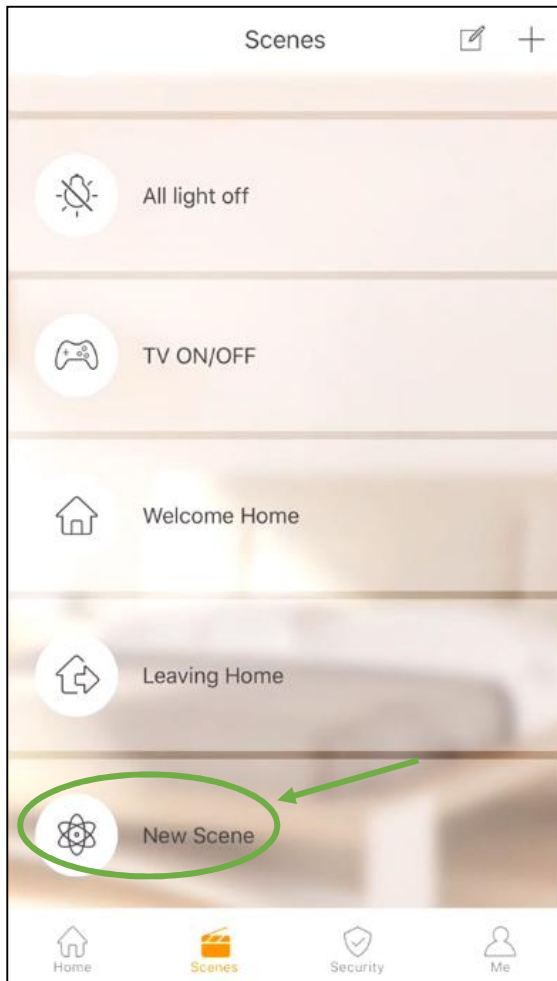
1. Click the “Bin Icon” at top right of “Light Dummy” device, then the device is deleted.

**Sample 3:** Add new device in (add another light into the scene)

1. Click “Continue Adding” to add new device



2. At the device list, tick the device you would like add in.
3. Click back at top left to save the action.
4. The new device “Light Living” added, you can set the action as “ON” or “OFF”.
5. Click back at top left to save the scene.



The new scene has been updated.